

Digital Video Recorder

XPE Series DVR Manual

*"The First Choice
of Your Digital Security Solution."*



Contents

Chapter 1	Service Requirement	3
Chapter 2	Product Information	4
Chapter 3	Product overview	5
Chapter 4	Digital Video Recorder	6
	Display Mode	6
	Setup Mode	14
	Search mode	33
Chapter 5	Plus Package	46
Chapter 6	CMS	50
	Display Mode	50
	Setup Mode	57
	Search mode	67
Chapter 7	Web CMS	78
Chapter 8	E-Map Editor / Viewer	80
Chapter 9	Warranty	84

Chapter 1 Service Requirement

Limitation of warranty

We warrant (return-to-base) that DigitalSI XPE Series DVR will be free from defects in materials and workmanship under normal use and service for all parts for a period of two years after the date that the customer purchased the product. Three year onsite warranties are available at the time of purchase only.

If a defect occurs, you should contact the system installation company or return the product to us accompanied with the proof of purchase, we will either repair or replace the product through our inspection. It is your exclusive remedy for breach of this warranty.

However this warranty shall not apply on repairs or replacements necessitated by any cause as listed below.

- 1) improper installation
- 2) acts of nature
- 3) accident
- 4) misuse
- 5) lack of proper maintenance
- 6) voltage fluctuations
- 7) unauthorised repair or modifications

For more details on the limitation of the warranty, refer to entire limited warranty as written at the end of this manual.

Service information

1. To avoid additional defects, do not attempt to repair this unit by yourself. Please contact a certified installer or DigitalSI to get service from an authorised technician. Unauthorised repairs will void the warranty, may result in fire, electronic shock or other hazards.
2. All shipment for repairs should be prepaid and properly packed with a letter outlining the defect.
3. For all onsite repairs, refer to the terms and conditions of the warranty that were provided with the DVR system.

Chapter 2 **Product Information**

Features

- ◆ Real time displaying and recording of video images and audio data for multiple cameras in PAL video format.
- ◆ Various data search and playback including object search, day search, time & date search, multi time/date/camera search, event search, and real time player (Audio).
- ◆ Versatile display format for effective monitoring: screen divisions can be 4, 1+5,3+4, 1+7, 3X3, 2+8, 1+12, 4X4, 2+17, 1+21, 5X5, 1+32 , or full screen. Also features auto screen conversion and programmable OSD for spot out.
- ◆ Programmable disk setup for recording, backup and disk format.
- ◆ Intelligent recording mode by motion/sensor detection recording, pre/post recording, intensive recording, instant recording, and special days recording.
- ◆ Interactive sensor/control setup with each camera for alarm recording.
- ◆ On-screen system status checker which includes disk info, network connection, backup status, data stream capture light, event log, and voice alarm for video signal loss.
- ◆ Event and system status alert by email notification.
- ◆ Advanced PTZ interface which includes preset, tour, alarm tour, multiple PTZ, and remote PTZ.
- ◆ Sophisticated data backup by recycling HDD format method - includes instant backup, network backup, schedule backup, and remote backup
- ◆ Supports various backup solutions: CDR, DVDR, IEEE1394, and USB. (Built-In Burning Software)
- ◆ Remote video/audio monitoring and management of the site DVR through LAN & WAN (DSL).
- ◆ 64 cameras simultaneously remotely monitored in up to 256 locations – can manage over 4,000 cameras at a remote site.
- ◆ Easy remote access to the DVR via a web interface.
- ◆ Convenient display of backup data on external storage by special viewer program which auto-runs on any system.
- ◆ Export and import setup information : apply the same setup information for multiple DVRs without individual setup.

Software Package Contents

- ◆ DigitalSI XPE Series DVR
- ◆ CMS Software
- ◆ Log Viewer Software
- ◆ Regbackup Import/Export Setup Software
- ◆ Watermarking Authentication Software

Chapter 3 **Product overview**

◆ DigitalSI XPE Series DVR

XPE Series DVR site program is an advanced surveillance system which enables real time display and recording with multiple cameras. Features include setup, search, backup and PTZ operation.

◆ CMS

CMS is powerful remote management software which performs remote monitoring. Features include setup, search, backup and PTZ operation.

◆ Log Viewer

Log viewer provides multiple functions to playback backup data and auto-runs on any PC. Log viewer enables the user to view system log details, and finds previous records of system operations.

◆ Regbackup Import/Export Setup

Regbackup backs up the setup information and applies this information to multiple systems which negates the need to perform multiple system setups with the same setup configuration.

◆ Watermarking Authentication

Authenticates JPEG & AVI backup files to verify whether original files have been altered or modified in any way.

Chapter 4 DigitalSI XPE Series DVR






Display Mode



- **Display Screen** – displays live and recorded camera images.
- **Screen Division and Sensor/Control** – select various screen division modes or activate sensor and control whilst monitoring status.
- **System Utility** – access to:
 - system operations;
 - search;
 - setup;
 - auto PTZ;
 - backup;
 - login/out; and
 - audio player.
- **Status** – displays:
 - disk info;
 - event information;
 - network access information;
 - 2 way audio; and
 - system time clock.

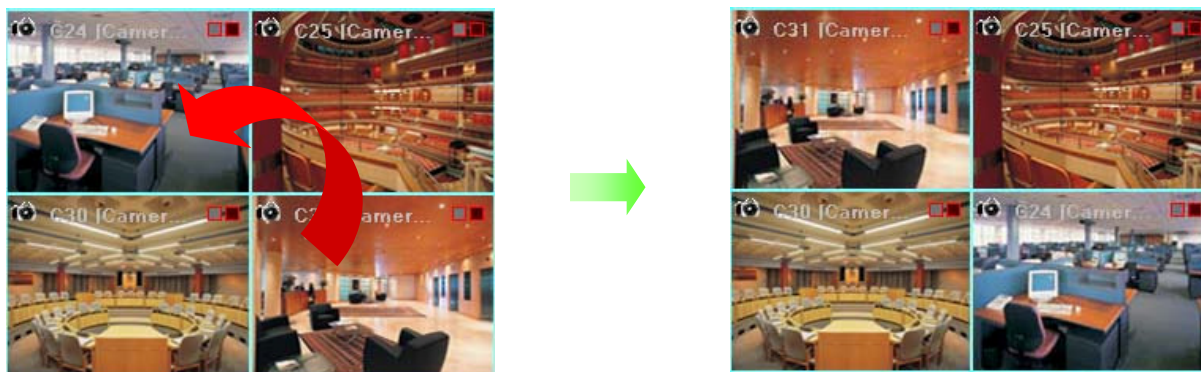
Display screen

- **C#** - camera number.
- **(Camer..)** - programmable camera name.
- **Data stream/capture light** - gradually moves when the system is recording , with differentiating colours indicating different recording modes.
- **Snapshot** - Click  icon to save the selected screen as a JPEG image.
- **Audio** - Click  icon to hear the audio data from each screen.
- **Mouse PTZ** - Move the mouse cursor to right lower corner to show **MPTZ** button to use PTZ control.
- **PTZ Controller** - Click  button to use PTZ controller.



- **Screen conversion mode **** - the position of each screen can be changed by using the drag and drop method.


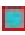
→ Left-click the screen which needs to be moved, and while holding down the left mouse button, drag the specified screen into the preferred position.



**** This function is only supported on the 32channel system.**

- **Screen Menu** – instant recording or searching through saved data from one, two, or three minutes ago.

→ Right click the mouse anywhere on the screen to show the instant menu screen options.

- **Instant recording** – Select 'Instant recording' to start recording in Instant Continuous Record mode. Recording status will change to a   blue colour.
- **Instant Search** – Click 'Instant Search' to search through saved data with a basic viewer.



Screen Division & Sensor / Control



- **Screen Division** – the following screen divisions are supported:

4 / 1+5 / 3+4 / 1+7 / 3X3 / 2+8 / 1+12 / 4X4 / 2+17 /
1+21 / 5X5 / 1+32 / full screen / auto conversion /
Picture-in-Picture (PIP).

- **Sensor/Control** – displays the status and activation of sensor/control.



**1+32
button**

This button only appears on the 32ch DVR.
Left click and drag any camera to the centre screen.
See the illustration to the right.



Click the GUI button to remove the Graphical User Interface.
The results can be seen in the illustration below.

GUI Button



- Move the mouse cursor to right side on the main GUI to show the screen division buttons that have been hidden .




Conversion button – cameras 1 to 32 are displayed in sequence.

If clicking on screen division buttons, the selected screen division will also display in sequential order.

Click the Conversion button to disengage the auto sequence function.



PIP button – two camera screens can be viewed at the same time using the PIP button. (function supported on 32ch system only)

- Display any camera as a full screen and then click on the PIP button.
- Click the  button which is on the lower right-hand side of the PIP screen to display the next camera screen in the sequence.



Status

- **Message** – click the message button to check event messages. Only the administrator is authorised to monitor event messages. Users will be prompted to enter the password for the administrator account, as shown in the illustration below.



Privilege

User name: administrator

Password:

OK Cancel

Event

The dates of event.	Contents
2006/09/30 16:31:36.984	User: administrator, has logged in.
2006/09/30 16:34:22.359	20060930_1634_#31(22265).jpg Create Success!!
2006/09/30 16:43:07.781	User: administrator, has logged in.
2006/09/30 17:20:46.093	User: administrator, has exited the program.
2006/09/30 17:21:49.343	User: administrator, has logged in.
2006/09/30 17:21:51.531	User: administrator, has exited the program.
2006/09/30 17:22:16.359	User: administrator, has logged in.
2006/09/30 17:45:53.031	User: administrator, has exited the program.
2006/09/30 17:46:51.562	User: administrator, has logged in.
2006/09/30 17:48:46.671	Save drive D:\ <START:2006-09-29 14:07 END:2006-09-29 20:04> is being formatted.
2006/09/30 17:48:57.828	Save drive D:\ has been formatted.
2006/09/30 18:08:23.187	20060930_1808_#04(23093).jpg Create Success!!
2006/09/30 18:09:10.468	20060930_1809_#01(10437).jpg Create Success!!
2006/09/30 18:09:38.062	20060930_1809_#01(38046).jpg Create Success!!
2006/09/30 18:11:26.859	20060930_1811_#01(26843).jpg Create Success!!
2006/09/30 18:15:40.346	20060930_1815_#32(40531).jpg Create Success!!
2006/09/30 18:15:48.140	20060930_1815_#32(48140).jpg Create Success!!
2006/09/30 18:18:55.187	20060930_1818_#23(55171).jpg Create Success!!
2006/09/30 19:55:24.515	Save drive E:\ <START:2006-09-29 20:05 END:2006-09-30 02:48> is being formatted.
2006/09/30 19:55:39.703	Save drive E:\ has been formatted.
2006/09/30 22:02:39.359	Save drive F:\ <START:2006-09-30 02:49 END:2006-09-30 09:48> is being formatted.
2006/09/30 22:02:48.000	Save drive F:\ has been formatted.
2006/10/01 00:12:13.390	Save drive G:\ <START:2006-09-30 09:49 END:2006-09-30 15:13> is being formatted.
2006/10/01 00:12:21.875	Save drive G:\ has been formatted.
2006/10/01 02:27:33.375	Save drive H:\ <START:2006-09-30 15:14 END:2006-09-30 17:48> is being formatted.
2006/10/01 02:27:43.906	Save drive H:\ has been formatted.
2006/10/01 04:46:11.343	Save drive D:\ <START:2006-09-30 17:49 END:2006-09-30 19:55> is being formatted.
2006/10/01 04:46:21.937	Save drive D:\ has been formatted.
2006/10/01 07:07:36.359	Save drive F:\ <START:2006-09-30 19:56 END:2006-09-30 22:02> is being formatted.

Clear OK



The following event details will be displayed (as seen in the illustration to the left):

- snapshot create;
- changes in REC (Frame rate, image quality, etc.);
- information for save drive events;
- information for user log in/out history;
- information for activated sensor;
- information for activated motion; and
- information for activated control.

- After viewing the event window, select the 'Clear' button to clear all of the displayed events.

- **Network Status** – Click the Network Status button to view the information of CMS and CVMS current connections.



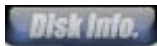
Remote Info.

Connect Type	Remote IP addr.	User name(ID)	Connecting time	The time elapsed
CMS	192.168.0.132	administrator	2006-10-02 11:58	01:35:14

Connect Type	Remote IP addr.	status
CMM	222.112.107.38	Idle

- **Network Status – View:**
 - ‘connect type’;
 - ‘remote IP address’;
 - ‘user name’;
 - ‘connecting time’;
 - ‘time elapsed’; and
 - ‘status’.

● **Disk info** – displays the information for each drive partition in the DVR system.



View details like current working status, size, format history, etc.

DVR (G:) : the disk currently saving data

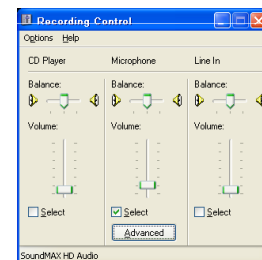
DVR (H:) : the next save drive

Name	Drive status	Start to save data	end to save data	drive size	date of the latest for...
DVR (D:)	OK	2006-10-02 05:04	2006-10-02 07:24	20GByte	2006-10-02 05:03:45
DVR (E:)	OK	2006-10-02 07:25	2006-10-02 09:46	20GByte	2006-10-02 07:24:03
DVR (F:)	OK	2006-10-02 09:47	2006-10-02 12:17	20GByte	2006-10-02 09:46:37
DVR (G:)	OK	2006-10-02 12:18	Saving...	20GByte	2006-10-02 12:17:47
DVR (H:)	OK	2006-10-02 02:44	2006-10-02 05:03	20GByte	2006-10-02 02:43:25

● **2WAY AUDIO** – Audio communication between the CMS and DVR.



- Audio chat button will flash on & off when audio communication is requested from CMS.
- Click CONNECT IP address, and click ‘Talk’ button to start audio communication.

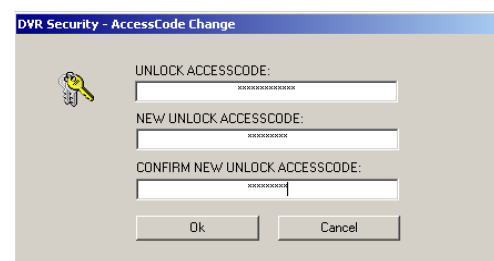


- To set up the port for 2 way audio communication, checkmark ‘Notice’ option. This begins 2way audio communication without accepting acknowledgement from the DVR site.
- Adjust the setup and volume of microphone with volume control buttons.



● **Digi-clock** – displays the system time and date. The format of these can be changed as per regional and personal preferences.

● **DVR security lock key** – Manages access to the Windows environment. Only one password can be set up for this function. The default password is 1234. The password can be changed by right clicking the mouse on the KEYS icon (shown below).



System Utility

- **E-Map** – click the E-Map button to view the position of cameras, sensors and control based on a JPEG or BMP image.



- **Image Viewer** – click the Image Viewer button to view the snapshot (JPEG) or watermarking file.



- **Single Viewer** – search and playback backup data during live monitoring mode.



- **Search** – access to various search modes including:

- general search;
- special search (real time, multi time, day search); and
- object search

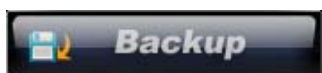


- **Setup** – access to the DVR setup menu



- **Backup** – access to various backup modes including:

- local backup;
- network backup;
- scheduled backup; and
- instant backup with CDR, DVDR, USB, Network or local HDD.



- **Logout** – log in or out, shutdown or restart.

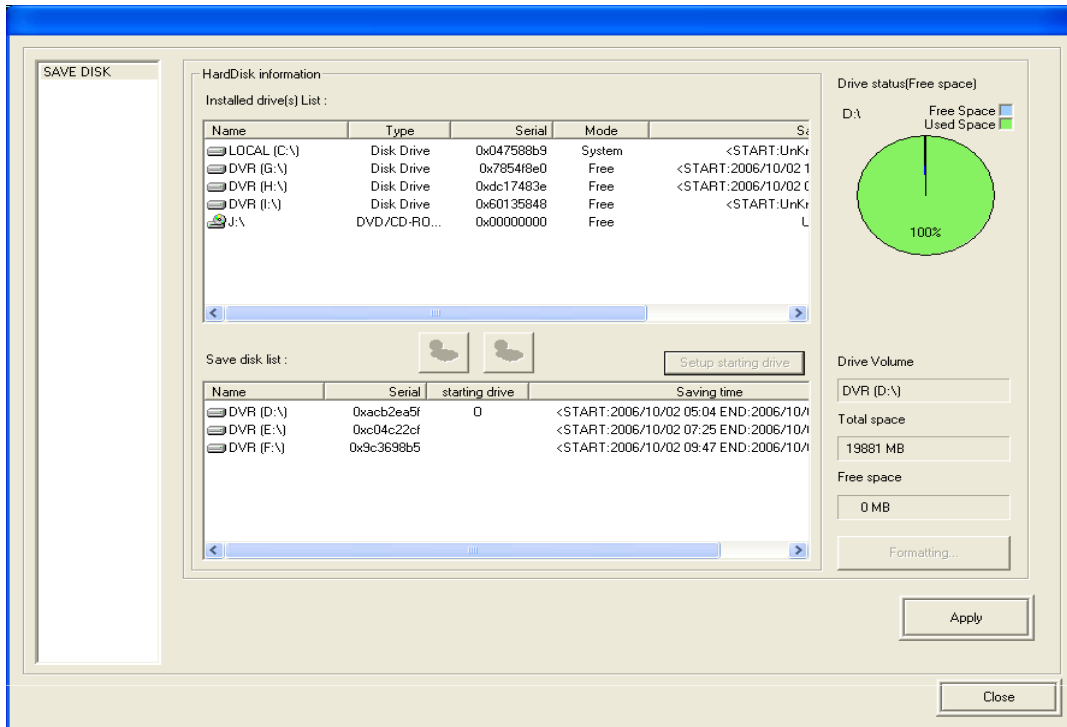


****Default user ID : Administrator / Password : 1234**
Ask administrator or dealer/ reseller if you have forgotten ID/PW.

Chapter 4 DigitalSI XPE Series DVR



● Setting up save disk

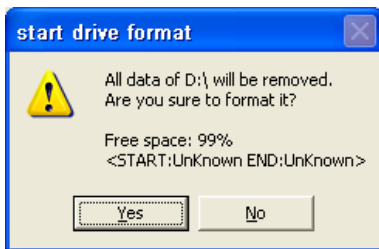


- **Hard disk information** – displays detailed hard disk status of the system.
- **Installed drive list** – all drive and installed devices are shown in a list along with the status.
 - **Type** – type of device (e.g. disk drive, DVD/CD-ROM etc)
 - **Serial number** – index of a drive. A new serial number is generated with each drive format.
 - **Mode** – ‘working off’ mode indicates that the drive is ready to save data.
 ‘working on’ mode indicates that the drive is currently working to save data.
 ‘system’ mode indicates that the is drive installed for system O/S & DVR programming.
 ‘free’ mode indicates that the drive is free to use.
- **Save disk list** – select the save disk from the ‘installed drive list’ and click the ‘+’ button and the selected drive will be moved to the ‘save disk list’. Click the ‘-’ button to remove the selected drive from the ‘save disk list’. Starting drive for data save is marked ‘o’. ‘Saving time’ shows the times at which data save will start and finish for each drive.
- **Setup starting drive** – select the starting drive and click ‘Setup starting drive’ button. If the drive needs to be formatted, click the ‘Apply’ button. ‘Format save drive’ box will pop up – click ‘Yes’. System will reboot and the drive will be ready to save data.
- Note that a HDD format will remove all data on the drive selected.
- **Drive status (Free space)** – displays the status of the selected drive, total space, and free space.

- When the 'Apply' button is clicked at save disk setup screen, the following message boxes will appear:

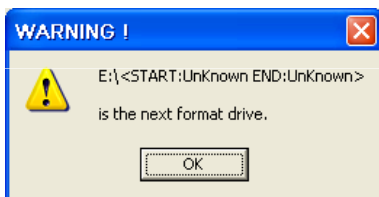
1. 'Start Drive Format':

Click 'Yes' to format the drive. This will also allow the user to check the status of the drive.



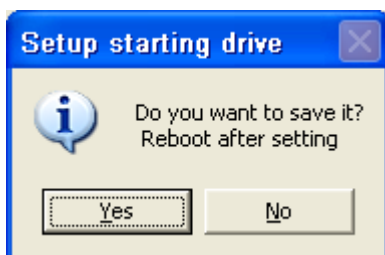
2. 'WARNING!':

Click 'OK' to automatically set the next formatting drive in sequence.

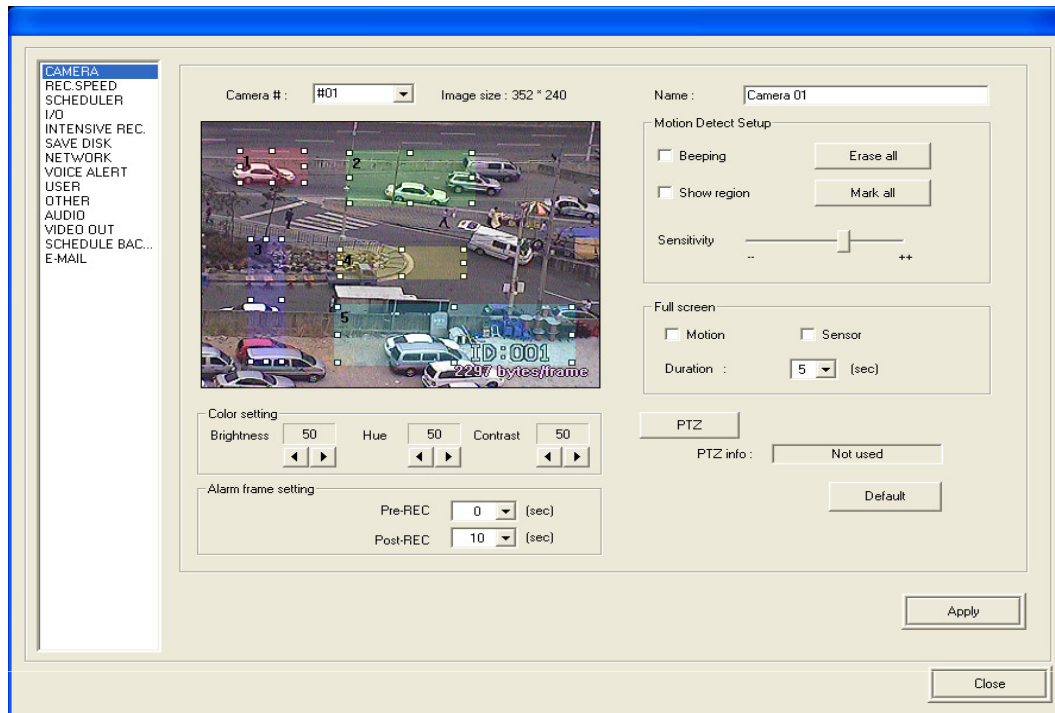


3. 'Setup starting drive':

Click 'Yes' to restart the system.

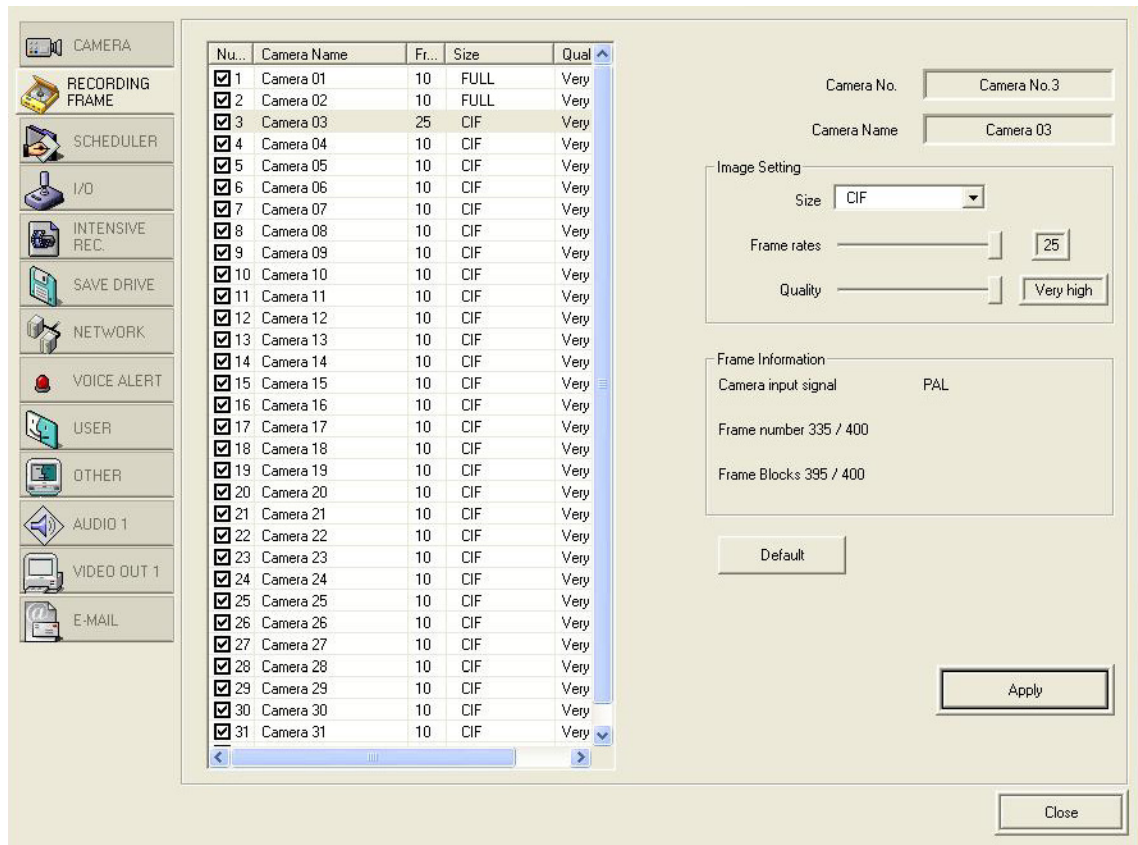


● Setting up the cameras



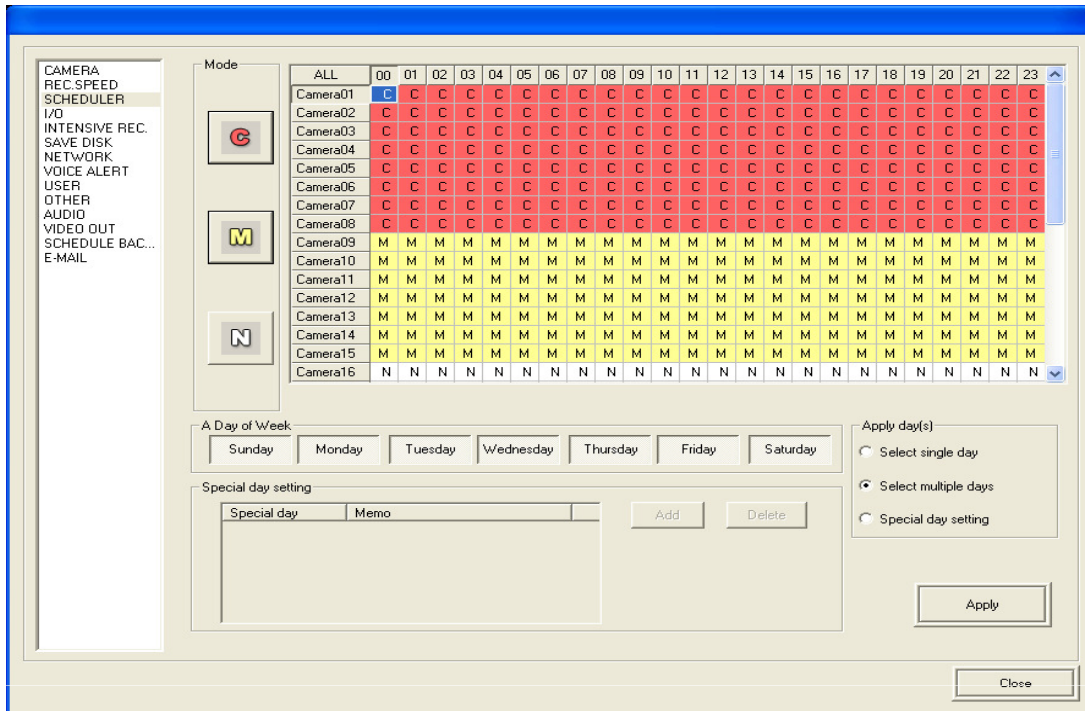
- **Motion detection region setting of each camera for recording** – select a camera from 1 to 32, and the image of the camera will be displayed. Up to five regions of motion detection may be set. Each region will be displayed as a different colour.
 - The recording schedule should be set to 'motion' in the 'SCHEDULER' menu with a minimum of 1 frame per second recording frame rate. If it is set to '0', these settings will not be applied.
- To erase any of the motion detection regions, left click on the region and either drag it out of the screen or press the 'DEL' key.
- **Name** – use the free text box to name each camera.
- **Motion detect setup** – to setup a sound alert when motion is detected, checkmark 'beeping'. Checkmark 'show region' to automatically display the specific detection region on screen when motion is detected. Adjust motion sensitivity with the 'sensitivity' scroll bar. To erase all detection regions, click 'erase all'. To create a detection region that spans across the full field of view of the camera, click 'mark all'.
- **Full screen** – when motion is detected, the camera screen will automatically display as full screen view and revert to the original divisions after the set duration time.
- **PTZ** – click PTZ button to show the setup information. Checkmark 'Use PTZ', and select appropriate information for the PTZ - name, baud rate, protocol, COM port (RS-232, RS-422, or RS-485) and PTZ address ID.
- **Colour setting** – modify brightness, hue and contrast settings for each camera.
- **Alarm frame setting** – setup 'pre alarm recording' and 'post-alarm recording' from 3 seconds to 240 seconds.

● Setting up Recording Speed



- **Camera list**
 - Number : Checkmark each camera to use or disable.
 - Name : Represents the camera name.
 - Frame : Represents the frame rate of cameras.
 - Size : Represents the image capture size.
 - Quality : Adjust the image quality of cameras.
- **Camera Number** – Represents the camera number that settings will be adjusted for on the camera list.
- **Camera Name** – Represents camera name that settings will be adjusted for on the camera list.
- **Image Setting**
 - Size : Adjust image size of each camera.
 - Frame : Adjust frame rate of each camera.
 - Quality : Adjust image quality of each camera.
- **Information** – Represents image type and frame / blocks which have been setup on all cameras.
- **Default** – Click the button to reset to the default settings

● Setting up Scheduler



▪ **Mode** : C = continuous recording

M = motion recording

N = no recording

▪ **Camera and Time Scheduler** : schedule recording of a combination of 8, 16 or 32 cameras over the 24 hours of the day. Drag the mouse over the scheduler table to designate the recording time for each camera. Then select the recording mode from the buttons on the left hand side to apply the settings. The colour of the designated recording zone will be updated (red for continuous recording, yellow for motion recording and white for no recording).

▪ **Day of Week** : select the day of a week to setup its specific recording schedule. A single day, multiple days, or a special day can be set (see below).

▪ **Multiple Days** : apply the same recording setup to multiple days of the week. Click on 'Select Multiple Days' and then choose each day to be duplicated. Setup the scheduler as normal and click 'Apply'.

▪ **Special day setting** : to apply a special recording setup to a particular day, select Special Day setting, click the 'Add' button and select the date on the calendar. The selected date will then be added to the 'Special Day Setting'. Setup the scheduler as normal and click 'Apply'. Remove these settings by clicking 'Delete'.

● Setting up I/O (Sensor & Control)

The screenshot shows the 'Sensor & Control setup' window. On the left is a sidebar menu with options: CAMERA, REC.SPEED, SCHEDULER, I/O, INTENSIVE REC., SAVE DISK, NETWORK, VOICE ALERT, USER, OTHER, AUDIO, VIDEO OUT, SCHEDULE BAC..., and E-MAIL. The main area is divided into three sections:

- Sensor & Control setup:** Contains two columns. The first column lists 'Sensor No.' from 01 to 16, each with a checked checkbox, a dropdown for 'NO' or 'NC', and a dropdown for 'CAM' (e.g., CAM 01, CAM 02, ..., CAM 27). The second column lists 'Control' from 01 to 16, each with a checked checkbox and a dropdown for a duration in seconds (e.g., 03, 03, ..., 03).
- Mapping Sensor to Control:** Features a 'Sensor No.' dropdown set to '01' and a grid of checkboxes for 'Control' (01-16). Control 01 is checked.
- Mapping Camera to I/O:** Features a 'Camera #' dropdown set to '01' and a grid of checkboxes for 'Control# (Output on motion)' (01-16). Control 01 is checked.

At the bottom right are 'Apply' and 'Close' buttons.

- **Sensor and Control setup** : checkmark sensor and control to activate. Check the sensor type, either NO or NC. NO (Normally Open) indicates sensor activation is open to closed. 'NC (Normally Closed)' indicates sensor activation is closed to open. Duration of control activation is adjustable up to 15 seconds.
- **Sensor recording setup** : match each sensor and camera. Recording will occur when a sensor is detected as top priority even under no recording mode in the scheduler.
- **Mapping Sensor to Control** : match each sensor to interact with single or multiple controls.
- **Mapping camera to I/O and control output on motion** : set each camera to interact with single or multiple control outputs. When motion on the camera is detected, the mapping control will be activated for the duration of control activation.

● Setting up Intensive Recording

▪ **Intensive recording** : special recording that records events with high frame rates upon motion or sensor detection. Recording mode on scheduler should be set as 'Motion'. Once intensive recording initiates, all normal recording settings are ignored. When intensive recording terminates, normal recording settings apply once more.

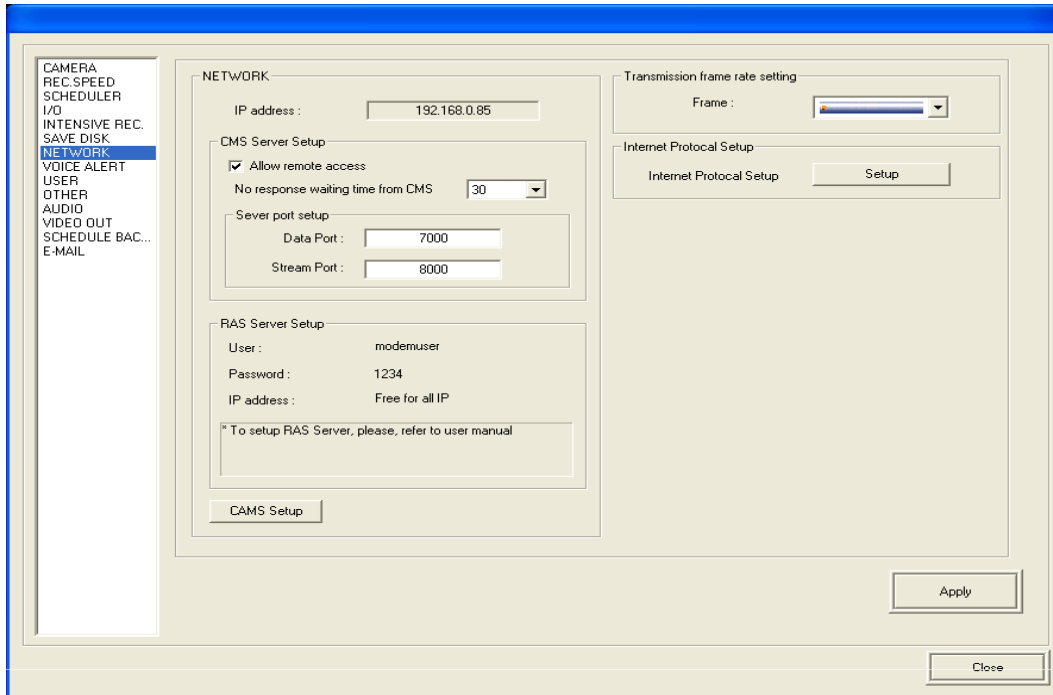
- Intensive recording CH : select the configuration number for intensive recording, can be up to 4 channels. After modifying each channel's settings, click 'Apply' before modifying settings for the next channel.

- Enable intensive recording : select the camera number and recording time, up to 7,200 seconds (120 minutes).

- Enable on sensor & on motion : checkmark to enable recording either on motion or on sensor. Single or multiple sensors can be mapped with each camera.

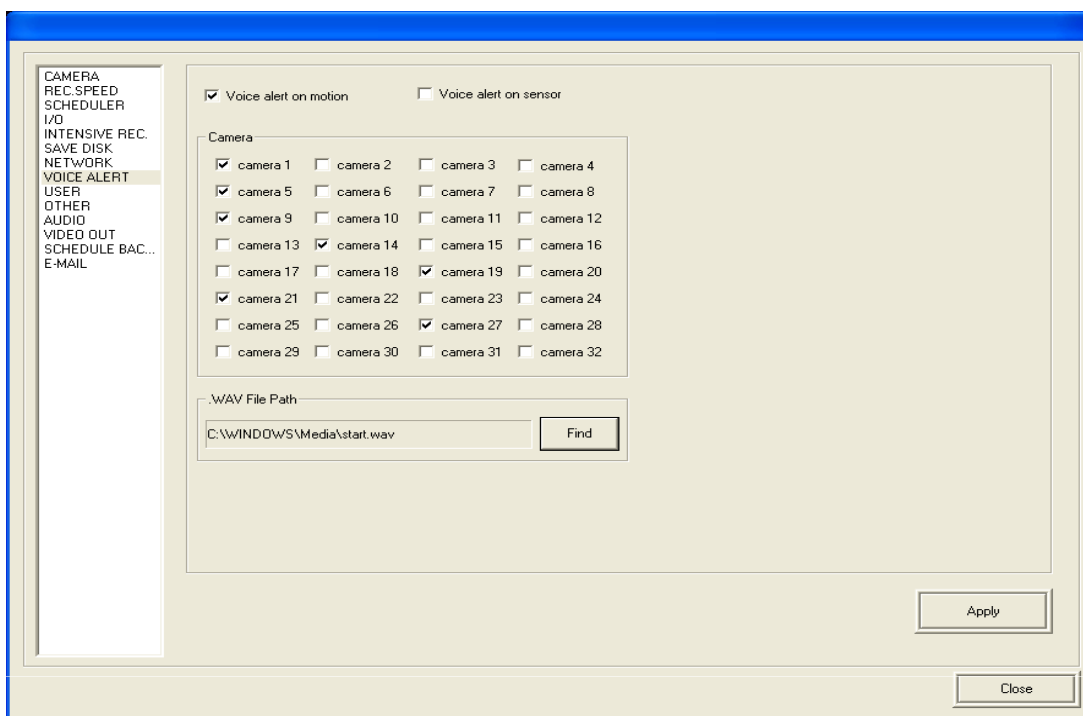
- Frame setting of intensive recording : set up the frame rate, up to 25 frames.

● Setting up Network



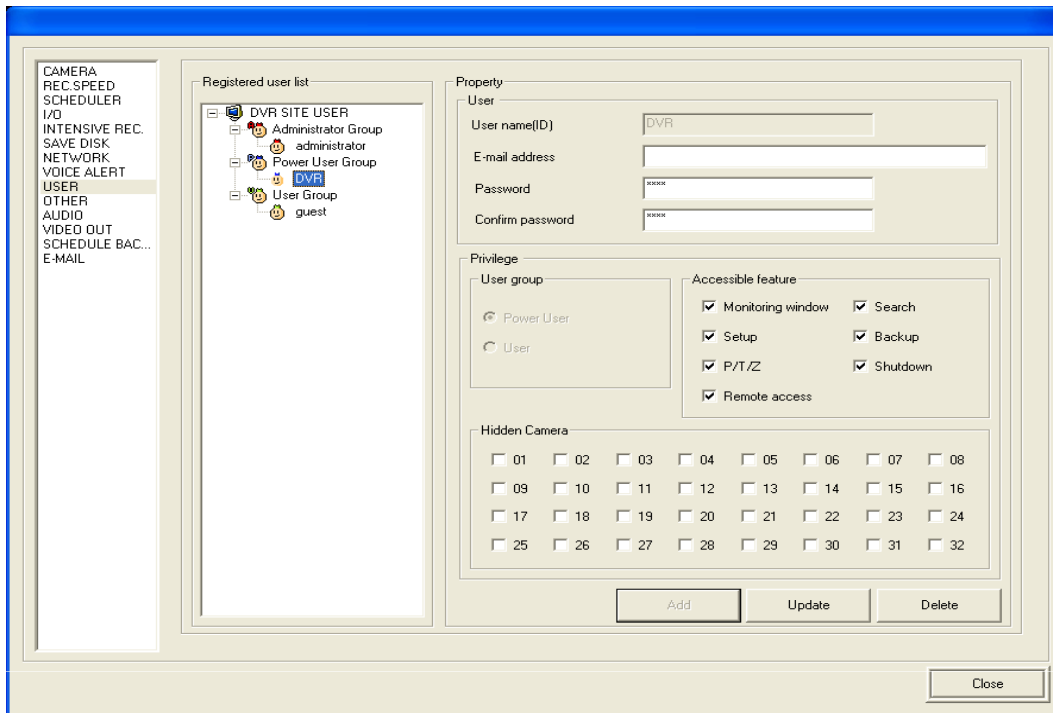
- **Network** : system supports TCP/IP and RAS server networking (via modem).
 - Allow remote access : checkmark to allow network connection of the system by CMS.
 - No response waiting time from CMS : Set the number of minutes that CMS will attempt to connect to the DVR system with no response. After the waiting time, CMS will reattempt to connect to the DVR system. The default waiting time is 30 minutes, and this can be adjusted up to 120 minutes.
 - **TCP/IP** : shows the information for the network connection of the system (i.e. IP address and port number).
- **RAS server setup** : shows the information for modem setup. Please refer to 'RAS SERVER SETUP' in chapter 4.
- **CVMS Setup** : please refer to CVMS manual.
- **Transmission frame rate setting** : Set up transmission frame rate to reduce network overload when CMS is connected.
 - **Frame** : transmission frame rate can be set as 100%, 70%, 50%, 30%,10% based on total recording frame rate which is set up on REC SPEED page.
 - **Internet Protocol Setup** : Modify IP address information.

● Setting up Voice Alert



- **Voice alert on motion / Voice alert on sensor** : checkmark to enable voice alert on either motion or sensor.
- **Select camera** : select single or multiple cameras to apply settings for voice alerts.
- **Wav file Path** : Select a .wav sound file to use as a voice alert.

● Setting up User group



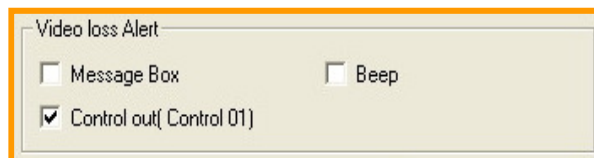
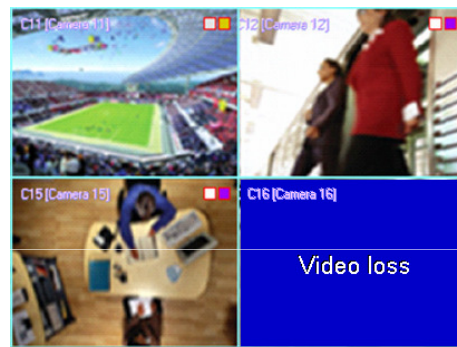
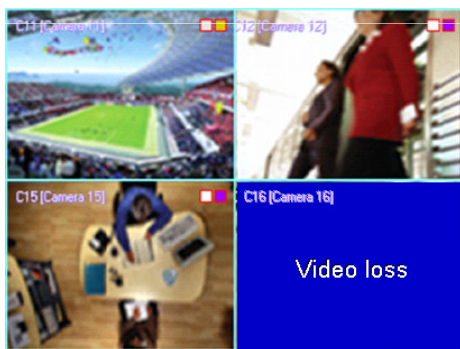
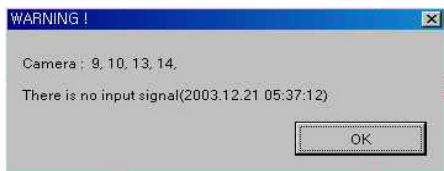
- **Registered user list** : displays the registered users in each group. There are three groups available for use - Administrator, Power user and User group. The 'Administrator' manages those groups by assigning security privileges.
- **Property** : input the user ID, email address and password for access to the system.
- **Privilege** : select user group, and checkmark accessible features.
- **Hidden camera** : the administrator can limit users' access to certain cameras. Select single or multiple cameras to hide.
- **Add/Update/Delete** : you can add, update or delete the user information.

● Setting up Other

- **Site info.** : displays system information including site code name, software version, and help information.
- **System information** : shows hardware information of the system.
- **Other configuration** : adjust switching time of auto-conversion in monitoring mode by using the drop down box in 'A time of Auto-conversion'. The digi-clock display format can also be modified.

- PTZ settings

- Multiple PTZ controller : checkmark to use the PTZ controller for multiple PTZ cameras on the system.
- Remote PTZ control : checkmark to allow PTZ control by remote user of CMS.
- Use Mouse PTZ : checkmark to enable mouse PTZ control (refer to PTZ operation later in this chapter).
- Show Mouse PTZ region : checkmark to show mouse PTZ control region on the screen (refer to PTZ operation later in this chapter).
- **Video loss alert** : When 'video loss' is detected, the system will give an alert by message box or beeping sound. Checkmark 'Control out (Control 01)' and this will be activated once 'video loss' event has been detected.



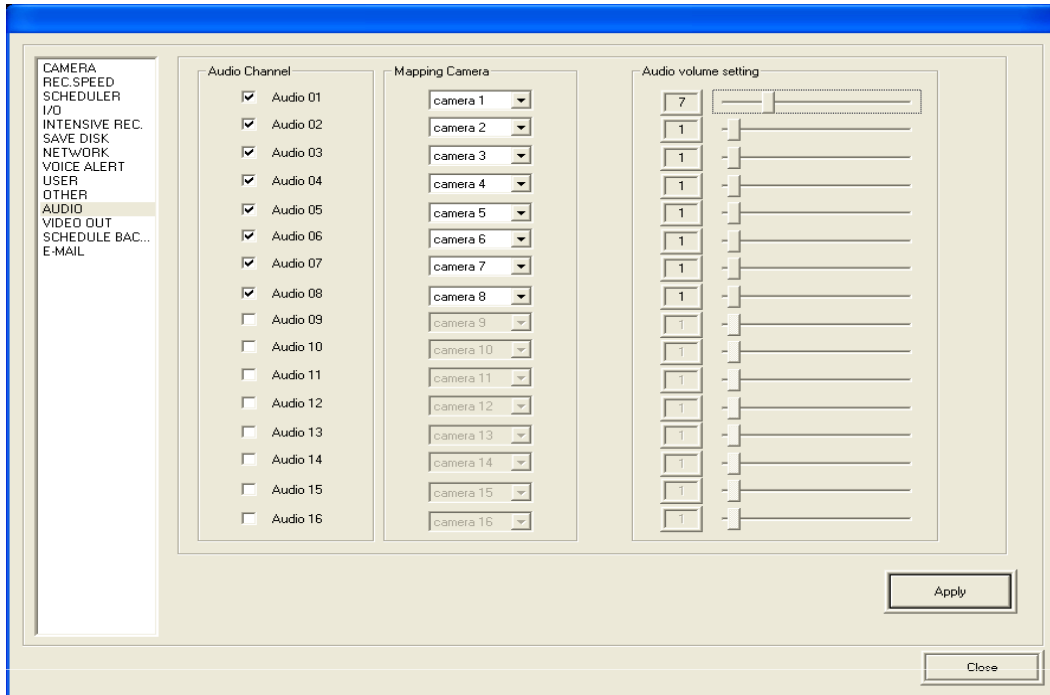
❖ Note :

Reasons for 'Video Loss' :

- 1) unstable video input connection;
- 2) disconnection of camera cable; or
- 3) No camera connection.

Check these possibilities on the system and program setup. If there is no camera connection, ensure that this camera is not checkmarked in recording speed – unused cameras should be disabled, or the video loss alert will pop up.

● Setting up Audio



- **Audio Channel** : checkmark audio channel to enable.
- **Mapping Camera** : each audio channel can be mapped to a specific camera for recording.
- **Audio volume setting** : adjust audio volume for recording from 0 to 31.

● Setting up Video Out

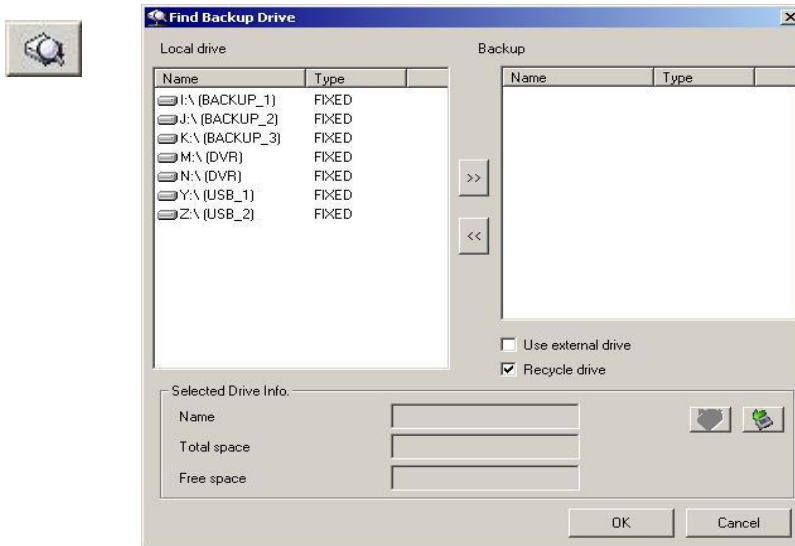
- **Video 01** : set up TV out display mode. Depending on the capture card specification, the TV out number will be more than one channel. Select the cameras to display and they will switch in numerical order.
- **Switching interval (sec)** : adjust switching time from 2 to 60 seconds.
- **OSD** : input the camera name to be displayed on TV out.
- **Display camera number** : checkmark to display OSD or camera number. If this is not checked, the image will be displayed without any OSD camera number. Only the camera image will be displayed.
- **OSD Font size** : Adjust the size of OSD font on the screen of the monitor.



● Setting up Schedule Backup

The screenshot shows the 'SCHEDULER' window with a sidebar menu on the left containing options like CAMERA, REC. SPEED, SCHEDULER, I/O, INTENSIVE REC., SAVE DISK, NETWORK, VOICE ALERT, USER, OTHER, AUDIO, VIDEO OUT, SCHEDULE BAC..., and E-MAIL. The main area displays 'There is no backup schedule.' at the top right, with a timestamp of 2006/10/09 13:46:52. Below this, there are three main sections: 'Backup data setting', 'Backup schedule setting', and 'Backup Drive Info.'. The 'Backup data setting' section includes 'Date setting' (Start: 2006-10-5, End: 2006-11-15) and 'Time setting' (Start: 7:00, Duration: 10:00, End: Today 17:00). The 'Backup schedule setting' section includes 'Backup cycle' (radio buttons for Daily, Weekly, Monthly) and 'Backup time' (Start: Today 14:00, Duration: 3:00, End: Today 17:00). The 'Backup Drive Info.' section has radio buttons for 'Local drive' and 'Network Drive', and a table with columns 'Name', 'Type', and 'Free Space/Total space'. A 'Reserved' button is located at the bottom right of the main area, and a 'Close' button is at the bottom right of the window.

- **Current time display** : displays current time and backup status.
- **Backup data setting** : data setting for backup. Setup the date and time of the data to be backed up. Adjust the duration in 'time setting' and the backup ending time will be calculated and displayed automatically.
- **Backup schedule setting** : select the backup cycle and backup time. 'Daily' runs a backup each day, 'Weekly' runs a backup of data from Monday to Sunday and 'Monthly' runs a backup of data from the first to the thirty-first day of the month.
- **Backup device info.** : select backup device by checkmarking either local device or network device. All installed drives on the system will be displayed with their drive status.

- **Schedule backup with local drive** : click the button to select the backup drive to be used.





Click the button  to add the drive, and click the button  to remove the device.

The selected device information will be shown below with the drive name, total space and free space.

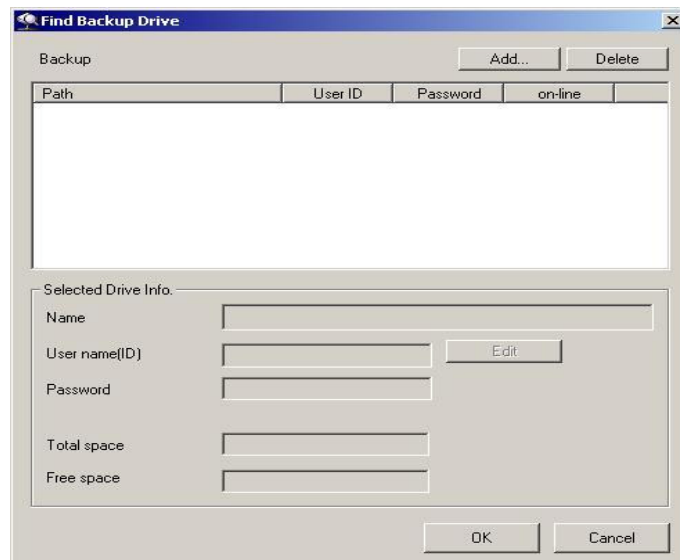
- 1) **Use external device** : checkmark if an external device is to be used for backup (e.g. USB or IEEE1394).
- 2) **Recycle drive** : checkmark to overwrite data and recycle the device when it is full.

Please note: Only one external drive can be used for backup at any one time. If you select more than one device, a warning message will pop up.

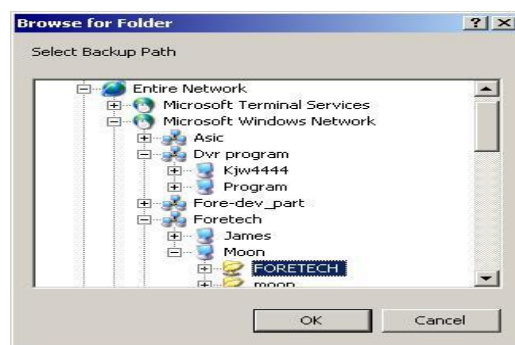
Format the selected drive before backup by using  button. Click  buttons to eject the external device. You must click 'Eject' button to remove the device safely.



- **Schedule backup with Network drive** : select 'Network drive' and click the button to find the device.



1) Click 'Add' button to select a network drive. Then 'Browse for Folder' will pop up. Enter the user ID and password to access to the network drive. Select the drive and folder.

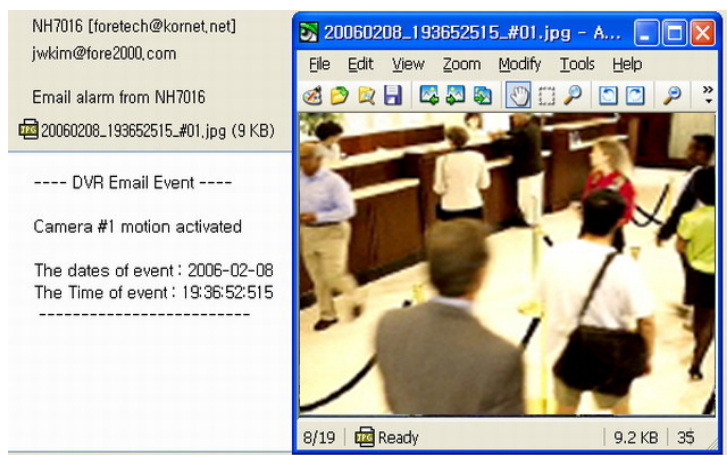


- 2) After folder has been selected, a pop up box will prompt to input ID and password again.
- 3) The selected network drive will be added to the path, and detailed drive information will be displayed in 'Selected Drive Info.'
- 4) The 'Edit' button will now be enabled. Click to change the password and ID to access network drive setup.

● Setting up email notification

Event images with text information may be sent by email.

- **SMTP** : Input the sender SMTP server address as well as the user name and password for server access.
- **Email address info.** : Input the sender email address and the receiver's email address.
- **Attach Screen** : select the type of event included in email and checkmark 'Attach Screen'.



[An example of data sent by email notification]

Chapter 4 DigitalSI XPE Series DVR



Playback Mode




- **Playback screen** : displays playback image.
- **Digi-clock/ Calendar** : digi-clock shows the current system time. The dates which have previously saved data are shown in a different colour. Select the date to search and the system will load the data.
- **Time table** : after the data has loaded the location of the saved data will be shown on the time table. You can select the camera and time to playback.
- **System Utility buttons** : provide access to 'Special Search' and 'Save' function. 'Special Search' provides 'real player', 'multi time player', 'day search' and 'object search'. When the 'Open' button is clicked, more search conditions are provided for more effective searching.
- **Screen division/Playback scroll** : shows the various screen divisions available and the progress of data playback on the scroll.
- **Audio playback speaker** : playback audio data.
- **Camera number** : When 'special search' is used, this camera number bar will show up. Click on the number of the camera to be played back.

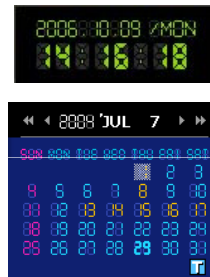
Playback Screen

- **C10(Camera 10)** : 'C10' denotes the screen number, while 'Camera10' is the camera name relating to the saved data.
- **x1** : shows how many times the picture is zoomed in.
- Double click the left mouse button on the screen to select the screen for playback. You can playback the single screen or zoom on the saved images by up to 5 times (x5). Click on the right mouse button to digital zoom. Keep clicking the right button to increase the digital zoom until it returns to normal.
- Double click the left mouse button again to return to the original screen division.
- **00:00:00:093 (M)** : hour: minute: second: millisecond (recording mode).



Digi-Clock / Calendar

- **Digi-Clock** : displays current time of the system.
- **Calendar** : the dates that have previously saved data are shown in an orange colour. When a date is selected, it is shown with a white box around it.
-  : indicates this month's calendar.











Time table

- When the 'Search' button is clicked, the system loads the saved data, and the data save location is shown on the time table with a different colour to the event. Double click each cell to playback the data.

	00												05 10 15 20			
Camera 1																
Camera 2																
Camera 3																
Camera 4																

- **Camera zone** : displays all cameras installed on the system.
- **Hour zone** : select the hour from 00 to 23.
- **Minutes zone** : select the minute from 00 to 59.

- **Event data cell** : each event data cell indicates a different recording mode, so the event type can be found easily on the time table.

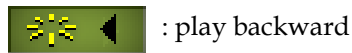
	: (Blue) Instant recording		: (S- light red) Audio recording
	: (Light blue) Pre-Recording		: (Pink) Sensor recording
	: (Violet) Intensive/sensor recording		: (Red) Continue recording
	: (Brown) Intensive/motion recording		: (Yellow) Motion recording

Screen division buttons / Playback scroll bar

- Select the playback screen as below, and control playback speed with the scroll bar.

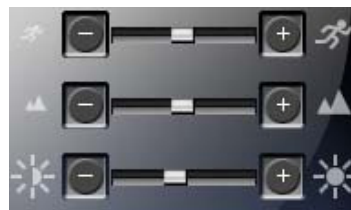


- **Playback status** : displays the progress of data playback.



System Utility buttons

- 1) Playback speed controller.
- 2) Zoom in/out controller – applies only to a single screen. This is different to digital zoom.
- 3) Brightness controller.



- **Playback speaker for audio data** : Click this button to playback the audio data using real time player.



● **Playback control buttons :**

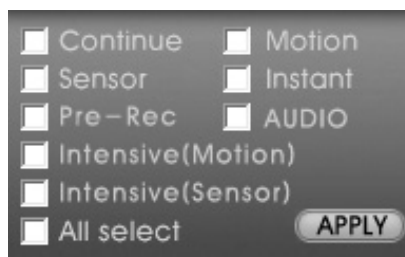
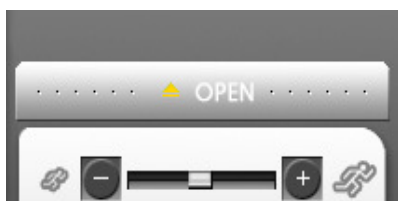


- Move to the first image of the data.
- Play backward per frame.
- Play backward.
- Stop to playback.
- Playback.
- Play forward per frame.
- Move to the last image of the data.

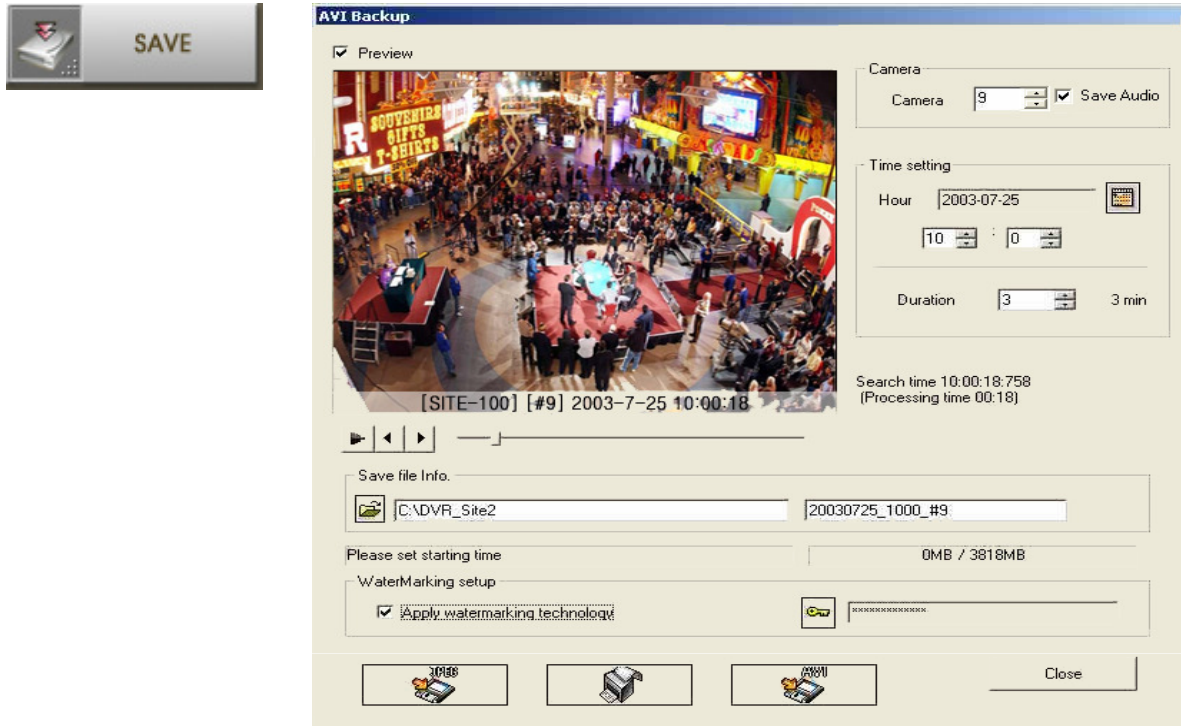
● **Special search :** click 'Special search' button, and open the 'sub menu' to access the advanced search tool, real time player, multi time player, day search and object Search.



● **General search :** go to search mode and click 'open'. There are detailed search conditions including continue, motion, sensor, instant, pre-recording, audio, intensive, and all. Select the search conditions and click 'Apply'.




- **Save** : click to save the data as JPEG, AVI or print format.



- **Camera** : select a camera. Checkmark 'Save Audio' to save the audio data from this camera.
- **Time setting** : set up the time of the data to be saved. Click the calendar, and select the date. Select the time and save the duration from 1 to 120 minutes (2 hours).
- **Preview** : preview the save data before the data save process commences.
- **Save file folder** : click the folder icon, and select the location. The default save location is C:\DVR_Site2. The file name is automatically the time of the data save. This can be changed by the administrator.
- **Size of save device** : displays total size of data to calculate the device capability. 0MB / 3818MB
- **Watermarking setup** : checkmark to apply watermarking technology. Click the icon to input the key code for watermarking. It can be changed by the administrator.
- **Save format** : you can select the format of data save from JPEG, AVI, and Print.

● Special Search

- 1) **Real Player** : special tool for audio data playback
Checkmark 'Real Player' and the system will load the audio data. The audio data is marked  inside the data cell. Click 'audio data cell' on the time table and click audio button and playback with the playback control buttons.



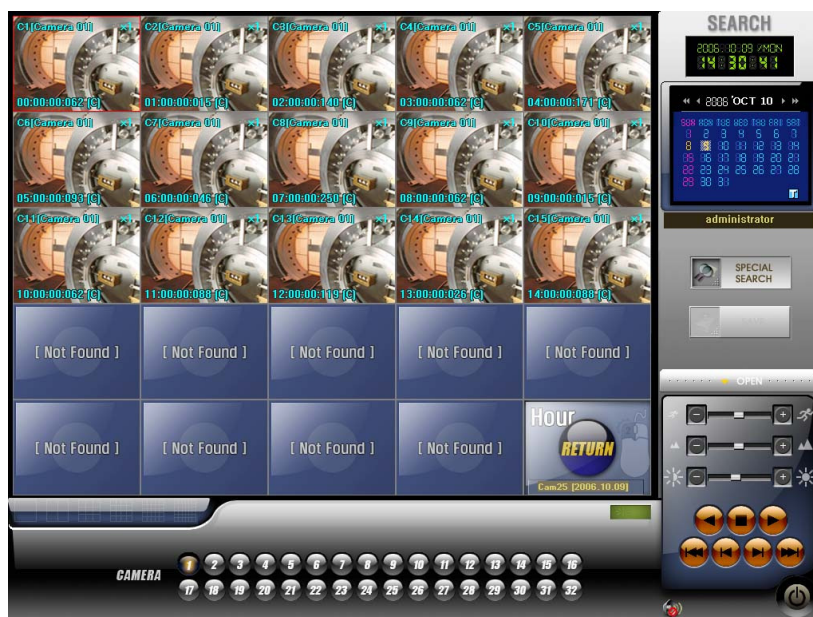
- 2) **Multi time Player** : playback the data on the multiple time zone on the same playback screen. Checkmark 'Multi time Player' and the system will load data. Select the data cell on the time table, and drag and drop it on the screen. The selected data will be shown. After all data is selected, playback with the playback control buttons.
- 3) **Day Search** : you can search through a day of data (00:00~23:59) per camera by hour or by minute.

Checkmark 'Day Search' and the system will load data. Select the camera to be searched, and the one hour will display in each screen. Playback the data with the playback control buttons.

To view the data of that day per minute, double click on the particular screen (hour) to be viewed. The hour will be displayed in five-minute intervals, and using the same procedure (double clicking on the interval) the data can be viewed per minute.

To return to the previous view, click 'Return'.


If there is no data in a specific time interval, the words 'Not Found' will display on the screen.



- 4) **Object Search** : To quickly search movement of an object in a specific zone, checkmark 'Object' search and select a camera to search. Click 'scan' button and drag to the designated area for searching.



- **Sensitivity** : select the sensitivity from 0 to 24. The default is 13.
- **SEC/MIN** : select search by minute or by second.
- **Time Scope** : set up searching time (hours and minutes).
- **Scan button**: click to designate the area for searching, and click again to begin search.
- **Result** : search results are shown. Click each result to check the movement. Normal playback can also be performed by clicking the playback control button.

-**Tip**: In the 'From' field, quickly skip through each hour to find when an object is moved. Then skip through the minutes to drill down the exact hour & minute the object was moved. Set the 'To' time within one minute of this time and then choose 'sec'. Click on  to view your results.

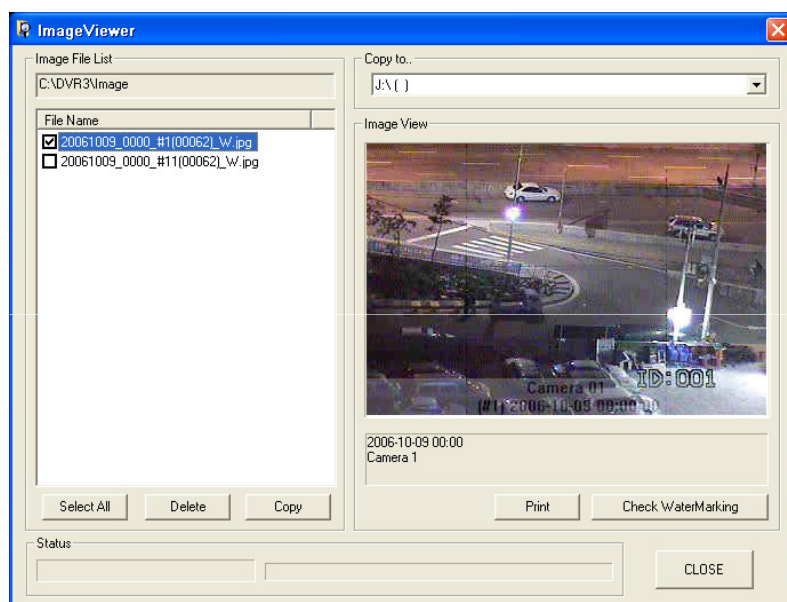
● E-Map Mode

- **E-Map** : Can monitor camera, sensor, and control by using a JPEG or BMP file.

** Refer to Chapter 8 E-Map Editor / Viewer for further information.

Image Viewer Mode

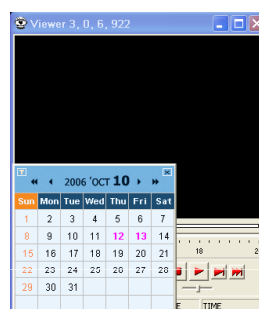
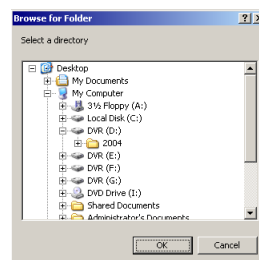
- **Image Viewer** : Verify / Modify snapshot or watermarking file.



- **Image File List** : represents JPEG file lists which have been saved as snapshot or for watermarking.
- **Copy to** : set up the drive to backup JPEG file to CD or USB.
- **Image View** : displays the appropriated image of the selected file on the list.
- **Status** : represents the status of files being copied.
- **Check watermarking** : Click the button to check if the file has been falsified.

Single Viewer

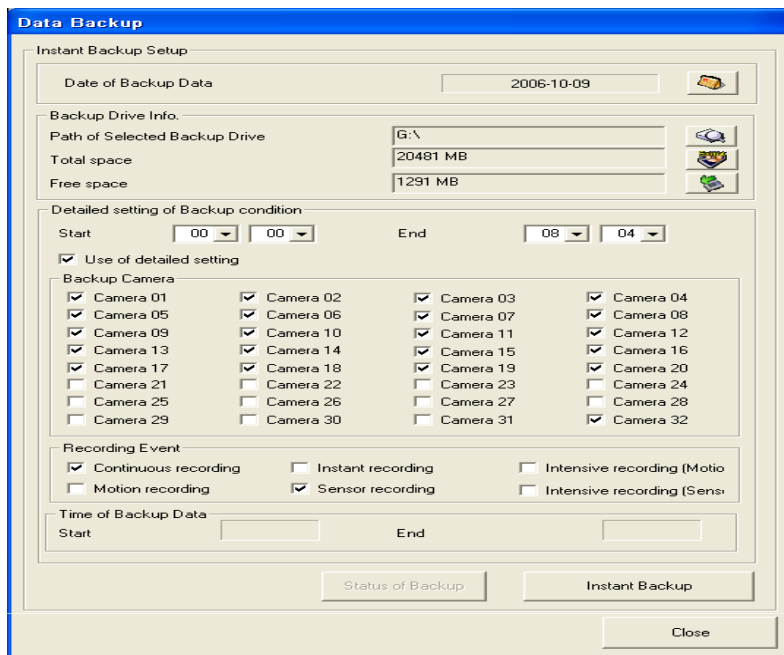
- **Viewer** : search and playback the save data during live image monitoring.




- **Browse for folder** : open the folder and select the directory. An incorrect selection will bring up a warning message. Reselect the drive correctly.
- When the drive has been selected, the calendar will pop up. The dates coloured pink have previously saved data. Click one of these days and select a camera to playback.
- **Time scroll bar** : displays the data location for one day. The blue bar shows audio data. Use this bar or playback control buttons to view the data. The data information, including camera number, date and recording mode will be shown on the image or at the bottom of the viewer box.

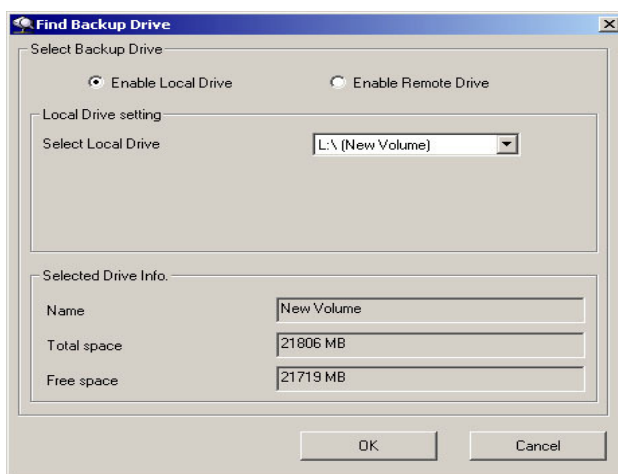
Backup Mode

- **Instant backup** : setup for instant backup. Each camera can be backed up with various event modes. A self-loading multi-viewer program will be created on the backup disk .



Tip : If wanting to backup all cameras, you do not need to checkmark 'Use of Detailed Setting' box as the system will automatically know that you wish to backup all cameras.

- **Date of Backup data** : select the date on the calendar.
- **Backup Drive Info.** : select drive for backup, local drive/external device or network drive. If you select the drive, it shows drive information. Format the drive with  icon.
- **Detailed setting of backup condition** : Set the start and end time for data backup.
Select 'Use of detailed setting' to backup individual cameras.
- **Recording event** : select the camera, checkmark event mode and adjust the time setting.



- **Find backup drive** : click the 'Path of selected backup drive' icon to open. Select the backup drive and click 'OK'.

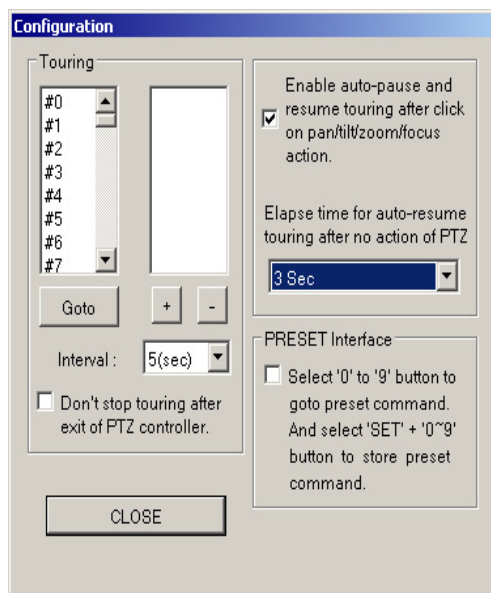
P/T/Z Mode

● PTZ controller



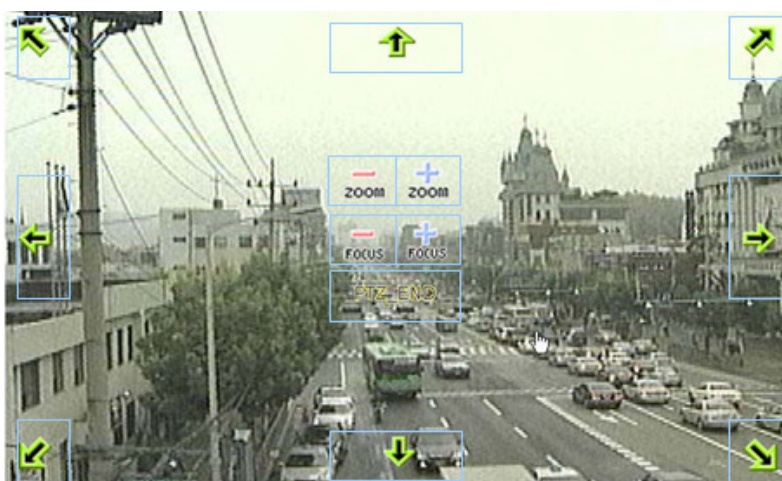
- 1) **PTZ Name:** displays PTZ camera name.
 - 2) **Close button:** close the controller.
 - 3) **Move buttons:** click the buttons to change the direction.
 - 4) **Compulsory termination button:** click it to stop immediately when an uncontrolled action occurs.
 - 5) **Zoom in/out button:** click to zoom in and out.
 - 6) **Screen No. :** indicates the selected screen number.
 - 7) **Auto control buttons:** controls auto-Iris, auto-Lateral and auto-Focus.
- (Note : Red colour light indicates that this function is not available with the selected PTZ.)
- 8) **PTZ Speed :** adjust the speed of PTZ movement.
 - 9) **Status box :** shows the status of PTZ activation, number of preset cameras and their respective speeds.
 - 10) **Status light :** click the light and adjust speed of Pan, Tilt, Zoom, Focus.
 - 11) **Preset Select :** for 'PRESET' setup, select a number and click 'SET' to save setup. Up to 255 presets can be setup. Click 'TOUR' to move automatically as preset position.

● PTZ control configuration



- **Tour Setting** : click 'SET' and 'AUTO' buttons to show setup box. Use the + and - buttons to select preset number to tour. Set up the interval of tour movement.
- **Goto** : jumps to the preset position.
- **'Don't stop touring after exit of PTZ controller'** : checkmark to keep PTZ touring after exiting of the controller.
- **Auto-Resuming Tour** : to control PTZ manually during PTZ touring, stop temporarily and control with the buttons. If there is no action by PTZ after the set time, it will automatically resume the original touring action.
- **Preset Interface** : go to 'preset' by SET + 0~9.

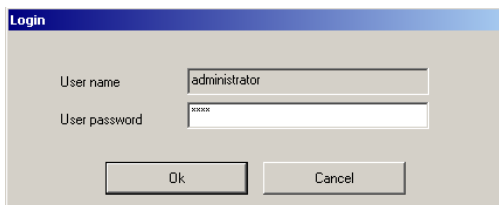
- **Mouse PTZ** : 'Show mouse PTZ' should be enabled for this function. Move the PTZ in the direction of the arrow, and use zoom in/out to focus. Click 'PTZ end' to complete.



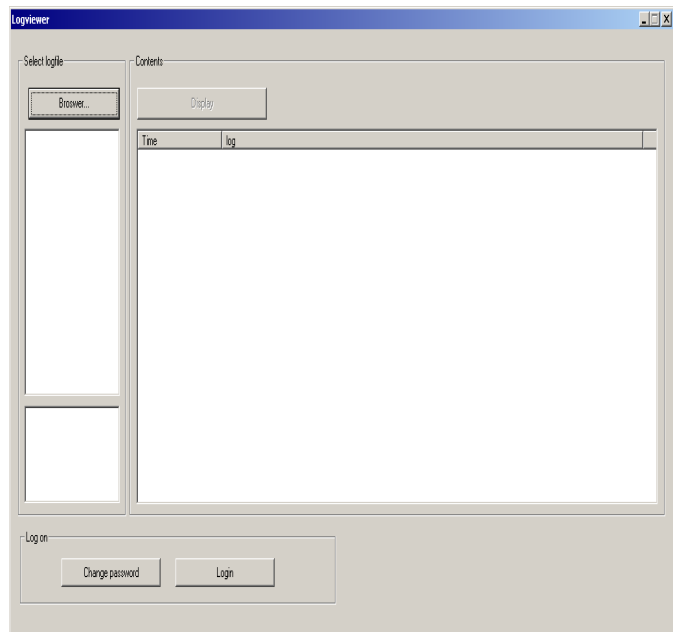
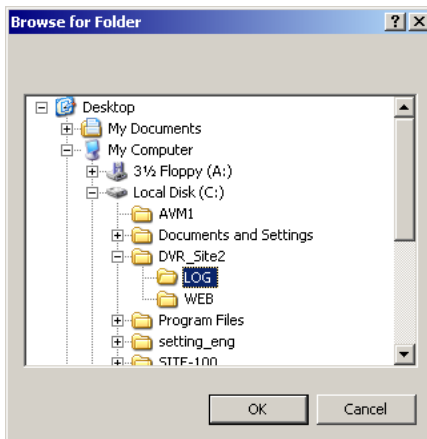
Chapter 5 Plus Package

Log Viewer

● Log Viewer is a specialised program which allows the user to view the log file of system operation. The log shows detailed system operation information with time details including program information. It aids in troubleshooting system errors by showing errors in system operation. - When the program is run, input the user name and password to log in. The default user ID is 'administrator' and the password is '1234'. Change the password by clicking 'Change password'.



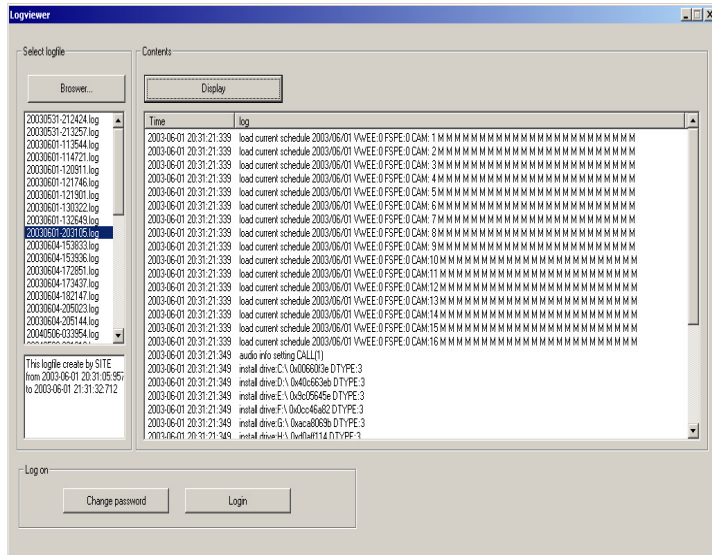
- Click 'Browse' to search for log folder. Go to 'C:\DVR_SITE3\LOG'.



- When the log folder has been selected, all log titles will display below the browser button. When the log file is clicked, the all log titles will show up on the below of browser button with log file information. Select particular log file, and click 'Display' button to show detailed log file information.

20030601-113544.log
20030601-114721.log
20030601-120911.log
20030601-121746.log
20030601-121901.log
20030601-130322.log
20030601-132649.log
20030601-203105.log
20030604-153833.log
20030604-153936.log
20030604-172851.log
20030604-173437.log
20030604-182147.log

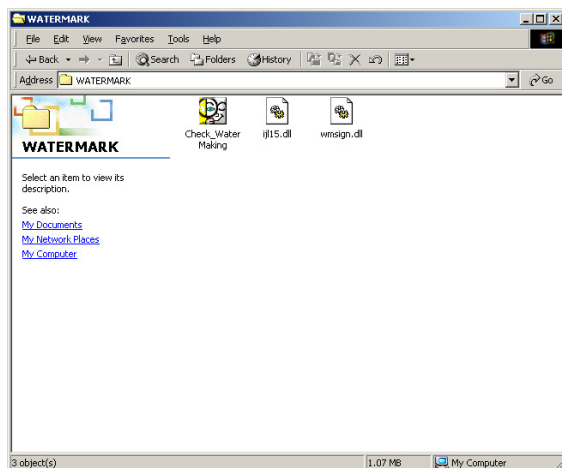
This logfile create by SITE
from 2003-06-01 20:31:05:957
to 2003-06-01 21:31:32:712



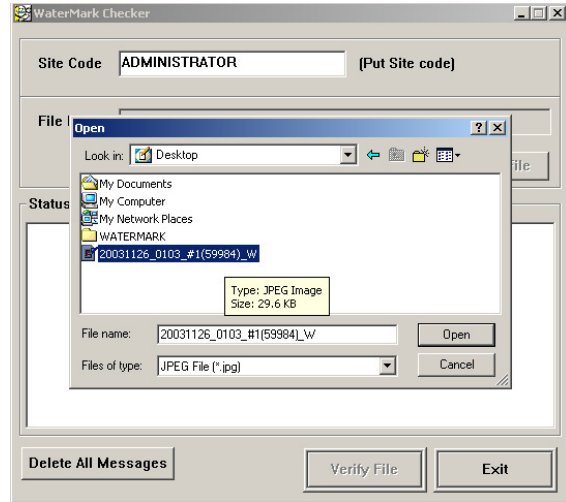
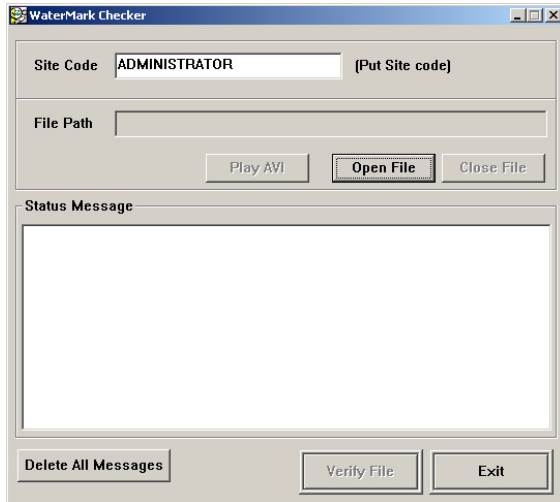
Watermarking Player

- All saved data from the XPE series DVR are watermarked, to identify any image falsification.

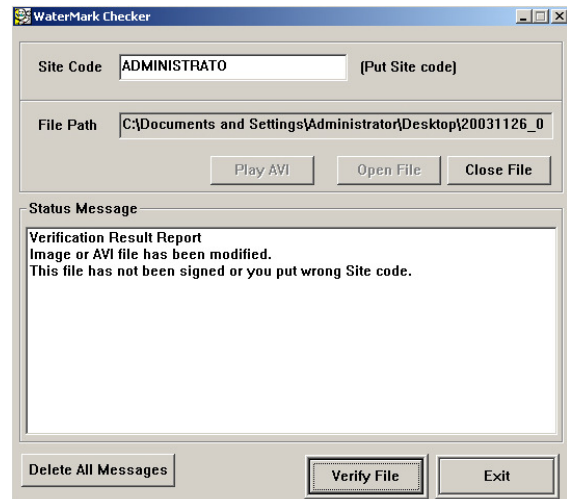
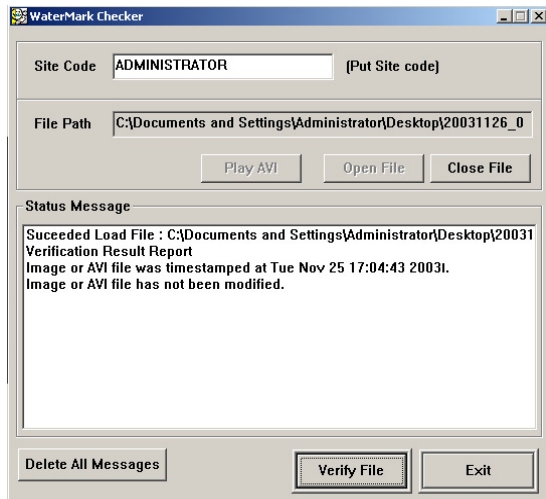
- Click 'Check Watermarking' to run the program.



- Input the watermarking key code. The default is 'ADMINISTRATOR'. Click 'Open File' and select the image file to view.



- Click 'verify file' to begin image verification process. The image is played back during verification. Check the verification results as shown in the diagrams below.

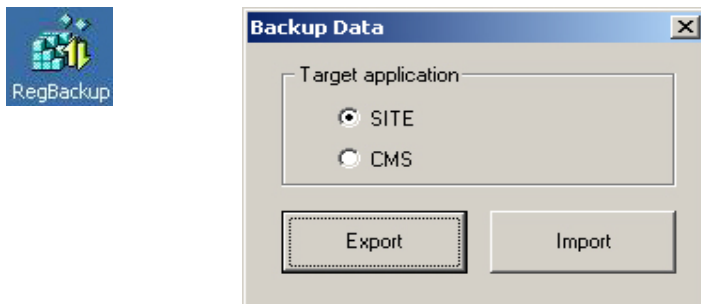


Registry Backup (Import/Export Setup)

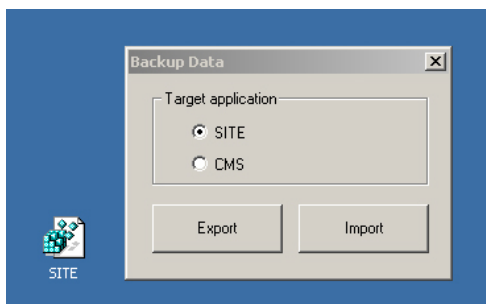
- Registry Backup is a specialised program which allows the user to apply the same setup for multiple systems, negating the need for multiple individual system setups.

- *Note : Please ensure that the multiple systems are of the same model and use the same program version. If the multiple systems differ, a system error could occur due to different registry. Please also note that this setup does not include save drive setup.*

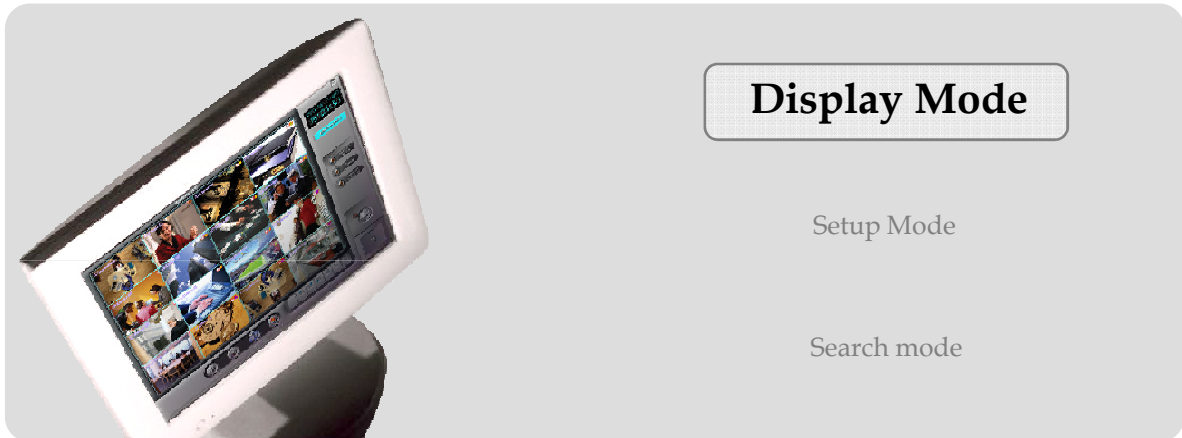
- Copy the program from the CD to any location, and run the program. Select the target application for import or export. Clicking 'Import' applies the same setup information to other systems, and clicking 'Export' backs up the setup information.



- When registry backup is complete, the same pop up box will display again. Apply the information that has just been backed up to another SITE or CMS system by now clicking 'Import'. To import the registry to other systems, copy the program and registry backup on to a CD or floppy disk. Again, click 'Import' to apply this information to the other system/s.



Chapter 6 DigitalSI XPE Series CMS



Display Mode





- **Display Screen** : Displays transmitted images or saved images by remote search.
- **Connection list & Screen Division & Sensor/ Control** : Connects to DVR. Select the particular tab in the connection list.
- **Sensor/ Control** : Activates Sensor / Control or allows the user to verify the status of sensor / control.
- **System Utility** : Click 'start' button to log in/out, go to setup, search, etc.
- **Status** : displays the information of system events, 2 way audio and saving disk.

Display screen

- **NS #1 [CAM01]** : represents site code, screen number, and camera name.
- **R / A**: “R” indicates that the image is saving on CMS.
“A” indicates that this image is linked to audio data.

- **C 10-12 16:30:14** : represents transmitted data events.
“10-12 16:30:14” DVR System time

- **E-Map** :  Click this button to use E-MAP.
- **Print** :  Click this button to print the image.

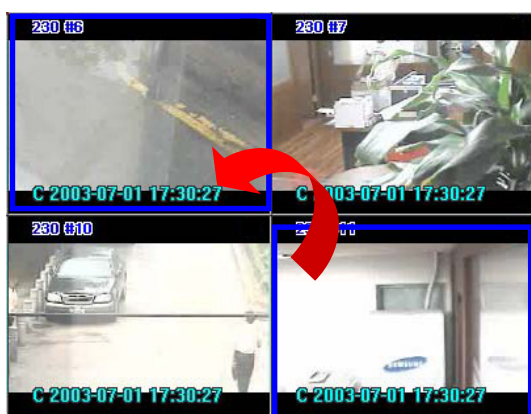
- **Snapshot** :  Click this button to save the desired image.

(Location for saving - C:\CMS_2KV3\Image)



**E-Map, Print, Snapshot buttons shown on one division screen.

- **Screen Switch in display mode** : right click the screen to be moved and drag to the desired location for display.



Connection list & Sensor/Control & Screen Division



Connection list

- There are two options on the connection list – Pre-Memorize and DVR List.


● Pre-Memorize


- Saves the screen information for each DVR in advance to effectively monitor multiple DVRs on the list.
- Screen list: Change the position of the camera after selecting the desired screen or list.

● DVR list


- Monitors each screen in order without extra display setup.

- **Single / Multiple Mode** : Click  button to activate single or multiple mode for pre memorize access.

- **Connection** : Click  button to connect to or disconnect from the DVR.

- **Remote Setup** : Click  button to use remote setup for selected DVR.

- **Remote Search** : Click  button to use remote search for selected DVR.

- **E-map** : Click  button to use E-MAP for selected DVR.

- **Status** : represents the information and the status of accessed DVR.



Sensor / Control

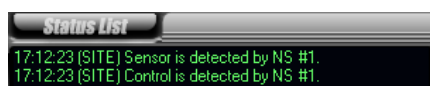
- Select the registered site name and click each button of sensor and control to activate.

Screen Division

- Various surveillance modes available through division buttons.

Status

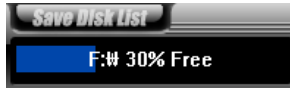
- **Status List** : represents the event message of the CMS program.



- **Status List** : Click the button to check the details of the event message.

Time (YY-MM-...)	Message
17:11:09	User administrator is logged on.
17:12:23	(SITE) Sensor is detected by NS #1.
17:12:23	(SITE) Control is detected by NS #1.
17:13:21	(SITE) Sensor is detected by NS #1.
17:13:21	(SITE) Control is detected by NS #1.

- **Save Disk List** : Select the drive to setup save disk for the data from each DVR site.

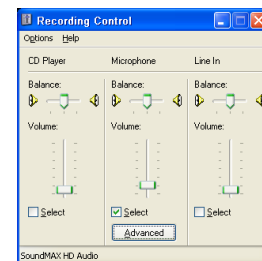
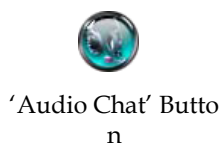


- **Save Disk List** : Free space and status of each drive can be monitored.

[illegible]

- **2WAY AUDIO** : Audio communication between CMS and DVR.

- Click 'AUDIO CHAT' button on CMS, select desired DVR and click 'Talk' button to send audio request to DVR site. The DVR site system shows that audio communication has been requested by CMS by flashing the 'Audio Chat' button on and off on the DVR site system.



- Set the port for 2way audio communication by typing the port number into the free text box and click 'Set'.
- Control the setup and volume of microphone with the volume button.

- **Digi-Clock** : displays the time & date of the CMS system. Time and date format can be



System Utility

- **Search** : access to the various search modes - general search; special search (real time, multi time, day search); and object search. This search is for locally stored data only. Use remote search to search data stored on the remote DVR for Time & Date or Event.



- **Setup** : Setup for CMS system.



- **E-Map** : Monitor the position of DVR, Camera, Sensor, and Control through E-MAP.



- **Log Viewer** : Check 'Log file' in the CMS system by clicking this button.



- **Logout** : log in or out, shutdown, place on EMC Standby , or close the program.

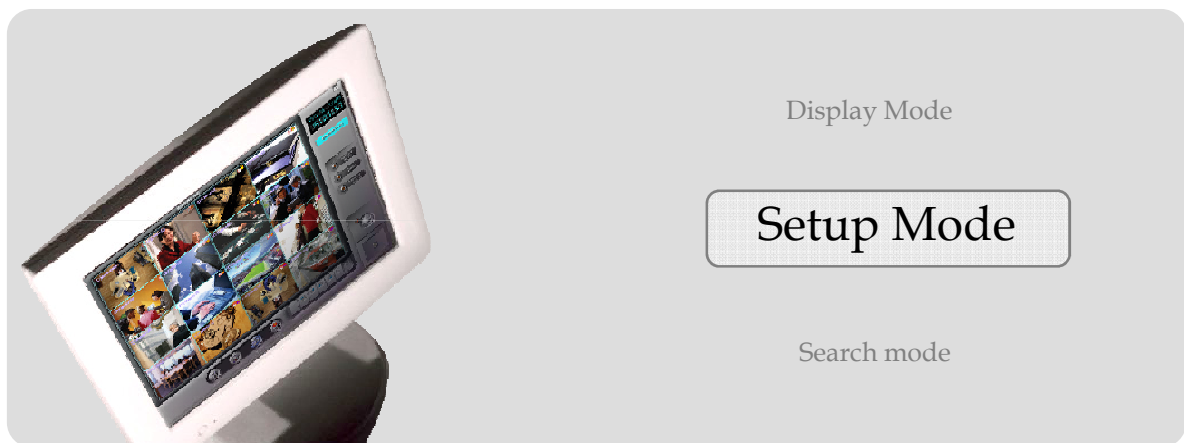


** Default User ID : administrator

Password : 1234

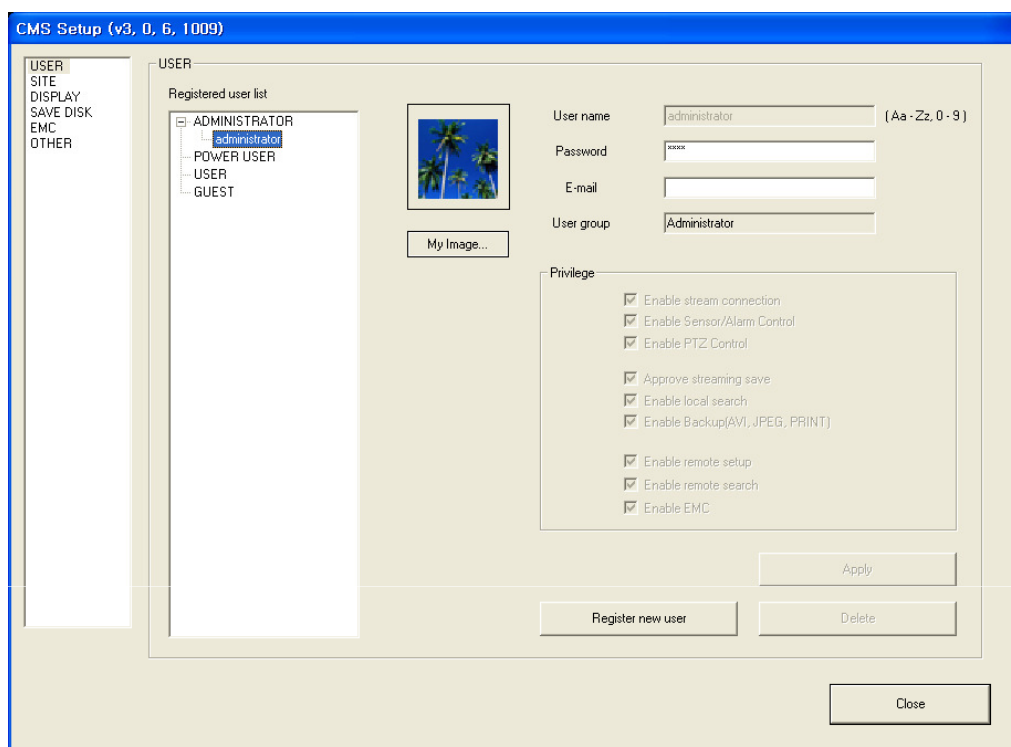
Ask your administrator or dealer if you have forgotten ID or password.

Chapter 6 DigitalSI XPE Series CMS



Setup

- **USER** : create a user group with different security privileges. The default group is 'ADMINISTRATOR'.



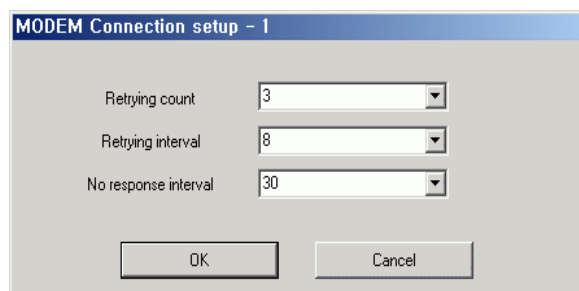
- **Registered user list** : Shows registered users and the group to which they are assigned.
- **Register new user** : click this button to add a new user, and click 'Apply'.
- **Privilege** : assign different privileges to each user.
- **My image** : change the preferred image (e.g. company logo).

- **SITE** : setup the network connection.

- **Registered site list** : shows all registered DVRs.
- **IP address of my computer** : shows IP information of CMS System.
- **DVR Info** : Input the information of network connection when the DVR is registered.

- **Add site** : Input Site name, DVR Type, PORT, and Site IP and click 'OK' to register.

- **Delete** : click to remove a registered site.
- **Edit site** : edit setup information for a particular site.
- **Conn. Setting** : modem connection setup. Setup Modem on the operating system and this button will be enabled. Adjust the time for retrying connection with and without response from the site system.



MODEM Connection setup - 1

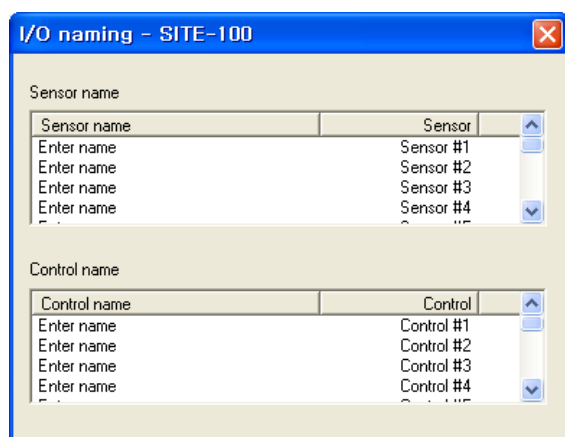
Retrying count: 3

Retrying interval: 8

No response interval: 30

OK Cancel

- **Pre-connect** : click to obtain the setup information from the site. Having this information decreases connecting time with site.
- **Remote setup** : when the site is connected, the user is able to setup the connected site.
- **Name I/O** : change the name of sensor and control. Double click 'Enter name' and input the preferred name.



I/O naming - SITE-100

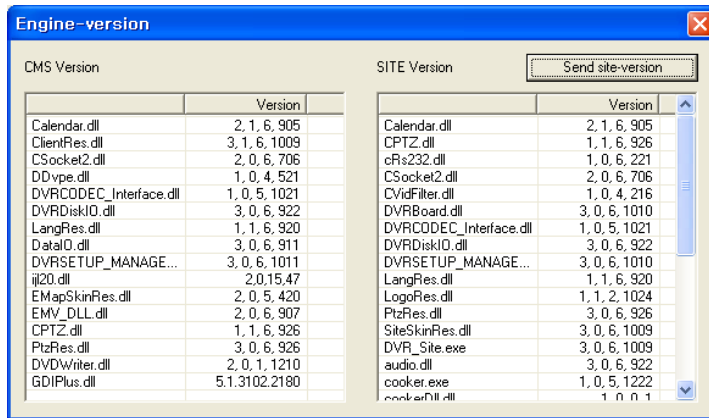
Sensor name

Sensor name	Sensor
Enter name	Sensor #1
Enter name	Sensor #2
Enter name	Sensor #3
Enter name	Sensor #4

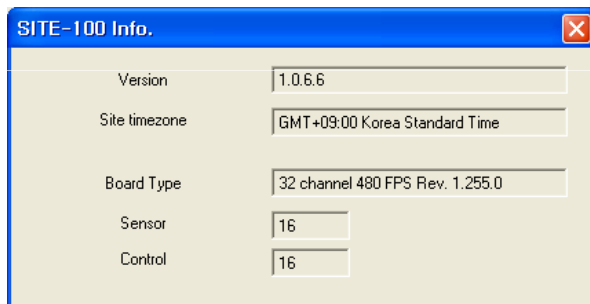
Control name

Control name	Control
Enter name	Control #1
Enter name	Control #2
Enter name	Control #3
Enter name	Control #4

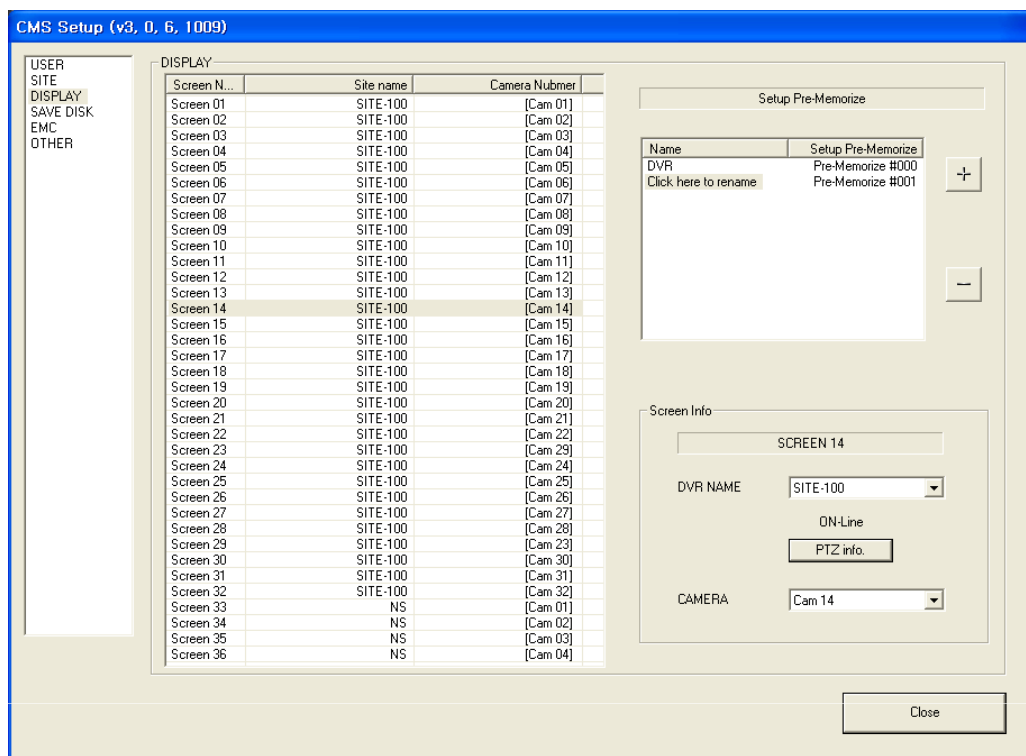
- **Show versions** : shows the version of CMS currently in use. Click 'Send site version' to show the information of the site version.



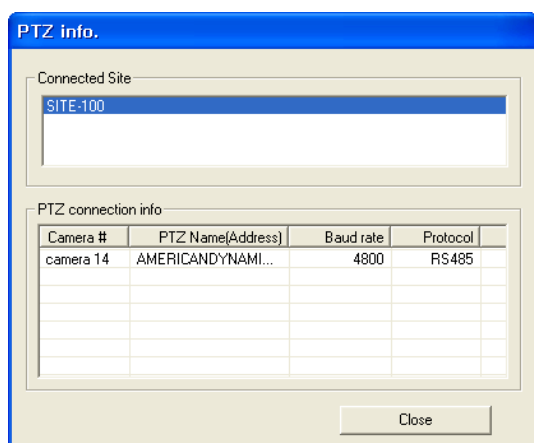
- **Site Info.** : shows the information of connecting to the site, the program version, time, capture card type, and the number of sensor and control.



● DISPLAY



- **DISPLAY** : lists CMS display screens and setup information for each.
- **Setup Pre-Memorize** : list is generated by clicking "+" and "-" after each display has been set up.
- **Screen Info** : Select DVR name and camera after highlighting the desired screen in the display list to monitor the image.
- **PTZ info** : Check the information for PTZ setup for each DVR.



● SAVE DISK

CMS Setup (v3, 0, 6, 1009)

USER
SITE
DISPLAY
SAVE DISK
EMC
OTHER

SAVE DISK

Site name	Save drive	Disk Free Space
SITE-100	G:\SITE-100	99.2666GB
NS	F:\NS	45.1642GB

Site name: SITE-100

Save drive: G:\ (DRIVE_FIXED) 99.2666GB

Info.

Save camera info. of all Sites

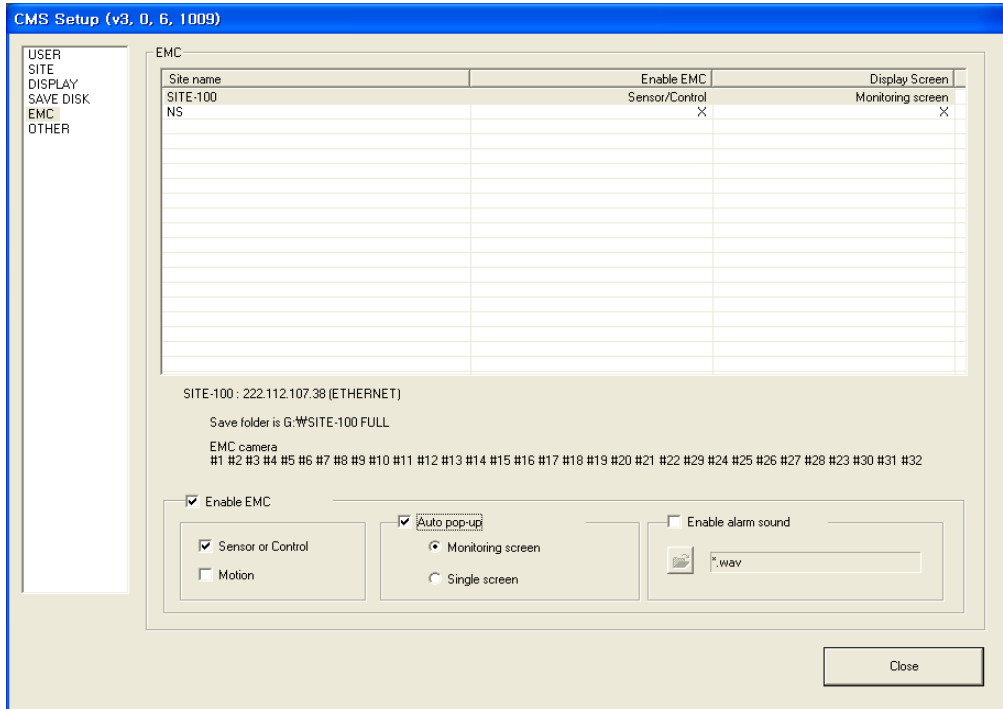
Save all transmitted stream.

Save in G:\SITE-100 folder, available space is 99.2666GB.

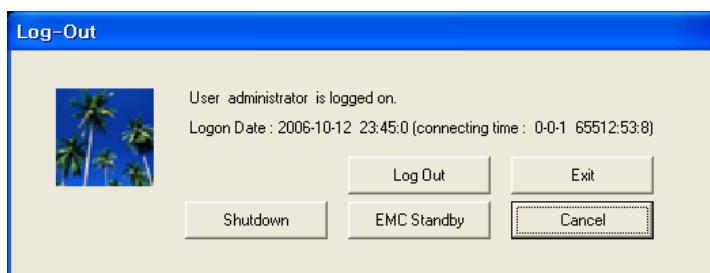
Close

- **Site list** : Lists all registered DVRs.
- **Save name** : The name of the DVR is shown here after highlighting that DVR from the site list.
- **Save drive** : the information of the drive in CMS system and information regarding the transmitted images saved for the highlighted DVR.
- **Info** : Displays setup information.

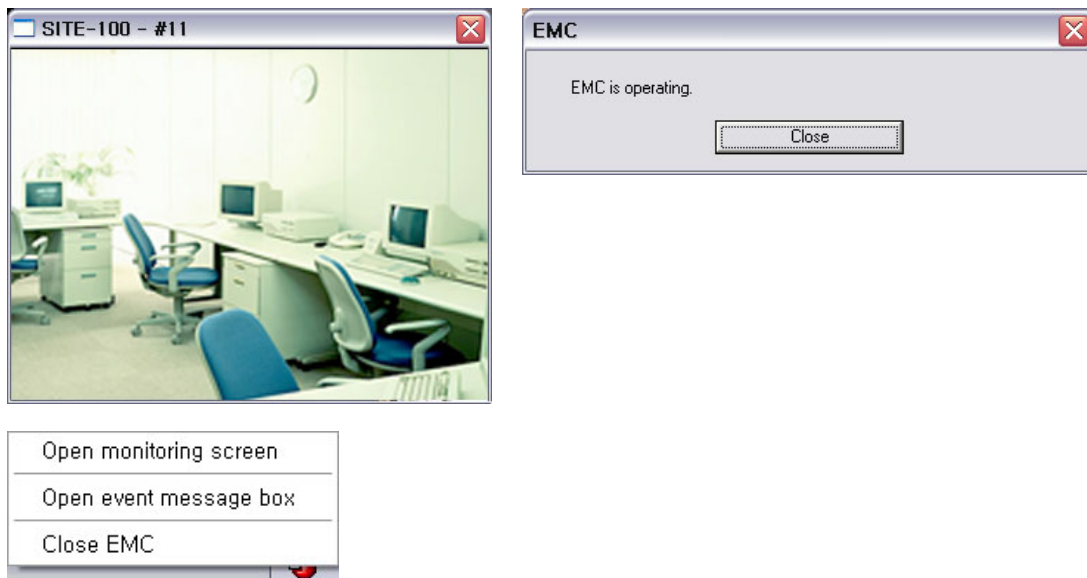
● EMC (Emergency Management Centre)



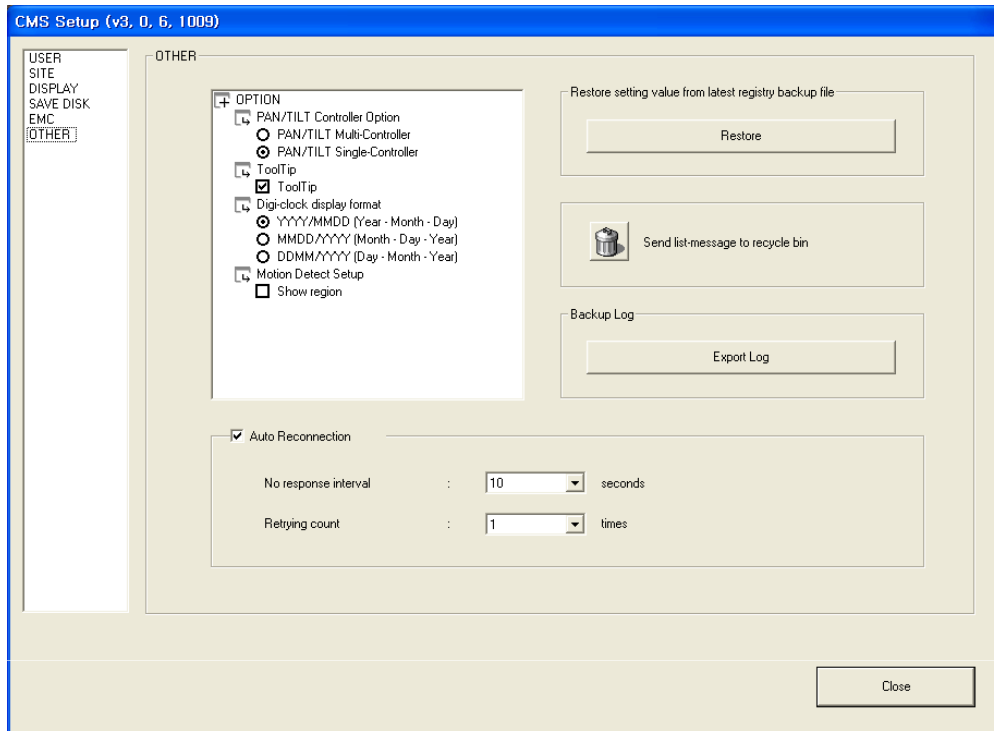
- **EMC mode** : when an emergency event occurs on the site, the event image is sent to the CMS system automatically shown on multiple or single screens.
- **Enable EMC** : checkmark to enable EMC. Select the event mode, which can be either 'motion' or 'sensor or control'.
- **Auto pop-up** : when the EMC is activated by motion or sensor/control, the event will pop up with a monitoring screen or single screen
- **Enable alarm sound** : checkmark to play an alarm sound when the EMC is activated. Open the folder and select .wav file.
- **EMC activation** : when setup is complete, go to monitoring mode and click 'log out' button. Select 'EMC standby' button and the EMC mode will be activated. The EMC icon (E) will display at the bottom right hand corner. The icon will turn red when the event screen pops up.



- **EMC single screen pop-up** : automatically pops up with site name and camera number.

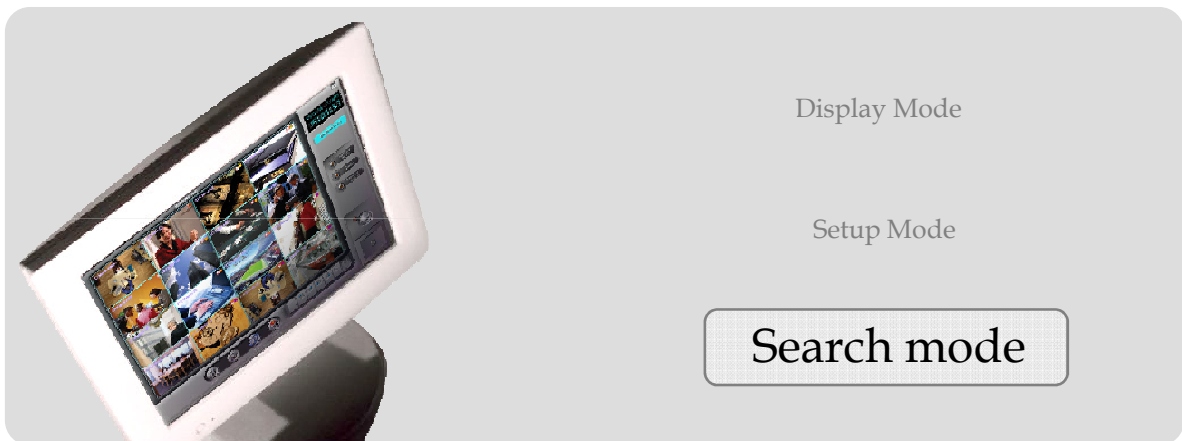


● OTHER



- **PTZ controller option** : Checkmark 'PAN/TILT Multi-Controller' to control each PTZ camera with a separate controller. Checkmark 'PAN/TILT Single-Controller' to manage all PTZ cameras with one controller.
- **Tool tip** : checkmark to give a function explanation when the mouse rolls over each function key.
- **Digi-clock display format** : select date format for the digi-clock.
- **Division 1 x 1 image size** : Normally, when a camera is selected in the display screen, the image will display as a 1 x 1 image size. Checkmark 'Show full screen' to have the image show in full screen.
- **Restore setting value from the latest registry backup file** : Click 'Restore' to apply the latest settings when a new CMS is installed on the same system. This negates the need to set up again.
- **Send list-message to recycle bin** : sends all the messages on the 'Message board' to the recycle bin.
- **Backup Log** : Backup log data.
- **Auto reconnection** : if the network is unstable and disconnects for a period of time, the CMS will retry the connection with the site system. Adjust the waiting time and retrying count.

Chapter 6 DigitalSI XPE Series CMS



Search Mode




- **Playback screen** : displays playback image.
- **Digi-clock/ Calendar** : digi-clock shows the current system time. The dates which have previously saved data are shown in a different colour. Select the date to search and the system will load the data.
- **Time table** : after the data has loaded the location of the saved data will be shown on the time table. You can select the camera and time to playback.
- **System Utility buttons** : provide access to 'Special Search' and 'Save' function. 'Special Search' provides 'real player', 'multi time player', 'day search' and 'object search'. When the 'Open' button is clicked, more search conditions are provided for more effective searching.
- **Screen division/Playback scroll** : shows the various screen divisions available and the progress of data playback on the scroll.
- **Camera number** : When 'special search' is used, this camera number bar will show up. Click on the number of the camera to be played back.

Playback Screen

- **C10(Camera 10)** : 'C10' denotes the screen number, while 'Camera10' is the camera name relating to the saved data.
- **x1** : shows how many times the picture is zoomed in.
- Double click the left mouse button on the screen to select the screen for playback. You can playback the single screen or zoom on the saved images by up to 5 times (x5). Click on the right mouse button to digital zoom. Keep clicking the right button to increase the digital zoom until it returns to normal.
- Double click the left mouse button again to return to the original screen division.
- **00:00:00:093 (M)** : hour: minute: second: millisecond (recording mode).



Digi-Clock / Calendar

- **Digi-Clock** : displays current time of the system.
- **Calendar** : the dates that have previously saved data are shown in an orange color. When a date is selected, it is shown with a white square box around it.
-  : indicates this month's calendar.

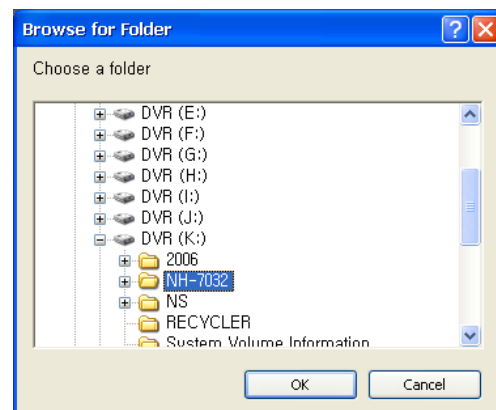


SEARCH

- **SEARCH** : Click this button to search the saved data.

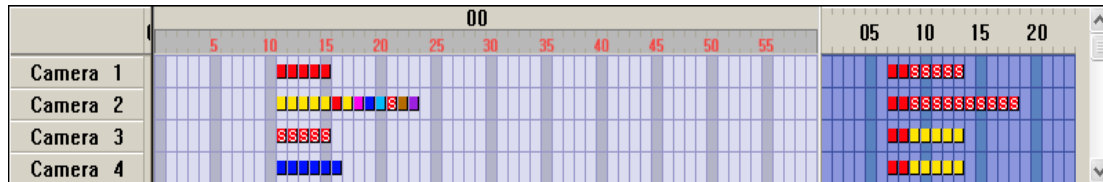


- Highlight the desired folder to be searched.











Time table

- When the 'Search' button is clicked, the system loads the saved data, and the data save location is shown on the time table with different colour of the event. Double click each cell to playback the data.



- **Camera zone** : displays all cameras installed on the system.
- **Hour zone** : select the hour from 00 to 23.
- **Minutes zone** : select the minute from 00 to 59.
- **Event data cell** : each event data cell indicates different recording mode, so the event type can be found easily on the time table.

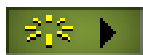
- | | |
|---|--|
|  : (Blue) Instant recording |  : (S- light red) Audio recording |
|  : (Light blue) Pre-Recording |  : (Pink) Sensor recording |
|  : (Violet) Intensive/sensor recording |  : (Red) Continue recording |
|  : (Brown) Intensive/motion recording |  : (Yellow) Motion recording |

Screen division buttons / Playback scroll bar

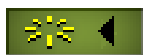
- Select the playback screen as below and control playback speed with the scroll bar.



- **Playback status** : displays the progress of data playback.



: playback



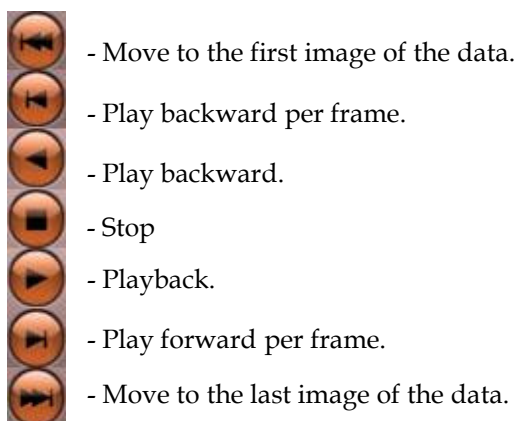
: play backward

System Utility buttons

- 1) Playback speed controller
- 2) Zoom in/out controller – applies only to a single screen. Double click the screen to modify its zoom.
- 3) Brightness controller.



● **Playback control buttons :**

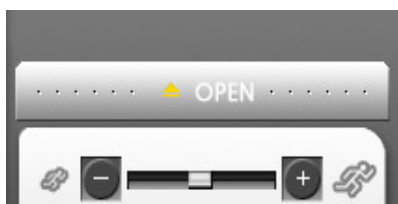


● **Special search :** click 'Special search' button, and open the 'sub menu' to access the advanced search tool, real time player, multi time player, day search and object Search.

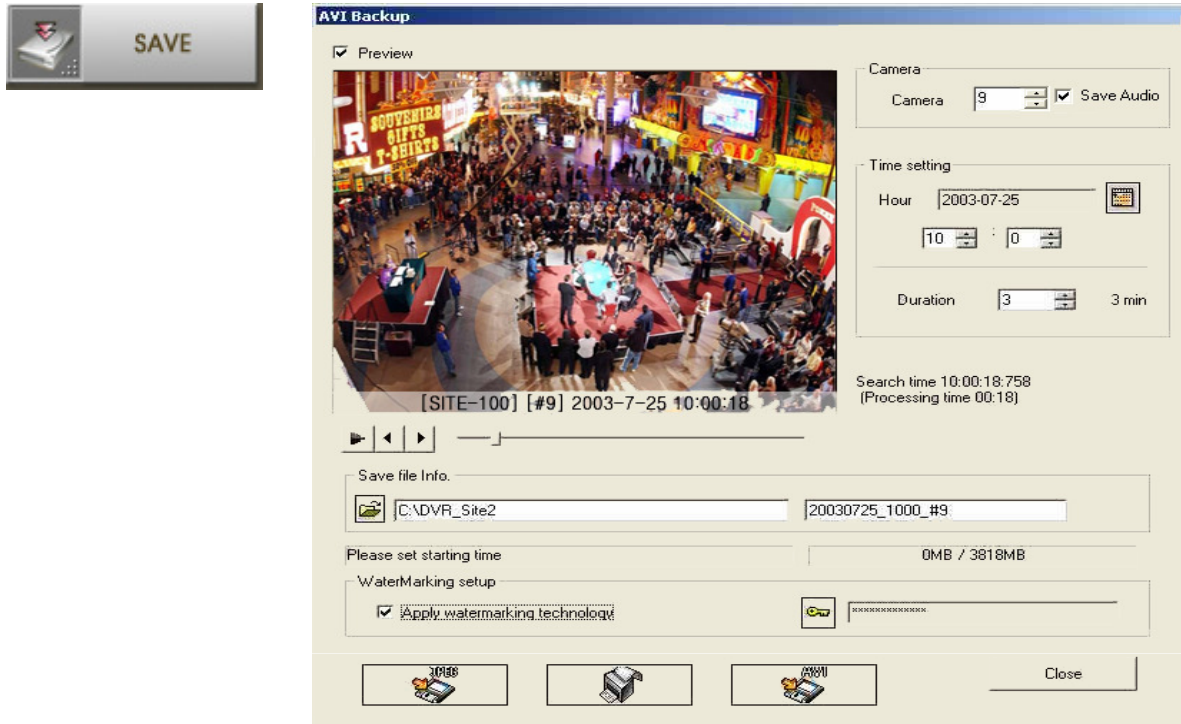
Note: This only applies to locally stored data either on the CMS system HDD or backup media.



● **General search :** go to search mode and click 'open'. There are detailed search conditions including continue, motion, sensor, instant, pre-recording, audio, intensive, and all. Select the search conditions and click 'Apply'.



- **Save** : click to save the data as JPEG, AVI or print format.



- **Camera** : select a camera. Checkmark 'Save Audio' to save the audio data from this camera.
- **Time setting** : set up the time of the data to be saved. Click the calendar, and select the date. Select the time and save duration from 1 to 120 minutes (2 hours).
- **Preview** : preview the save data before the data save process commences.
- **Save file folder** : click the folder icon, and select the location. The default save location is C:\DVR_Site2. The file name is automatically the time of the data save. This can be changed by the administrator.
- **Size of save device** : displays total size of data to calculate the device capability.
- **Watermarking setup** : checkmark to apply watermarking technology. Click the icon to input the key code for watermarking. It can be changed by the administrator.
- **Save format** : you can select the format of data save from JPEG, AVI, and Print.

● Special Search



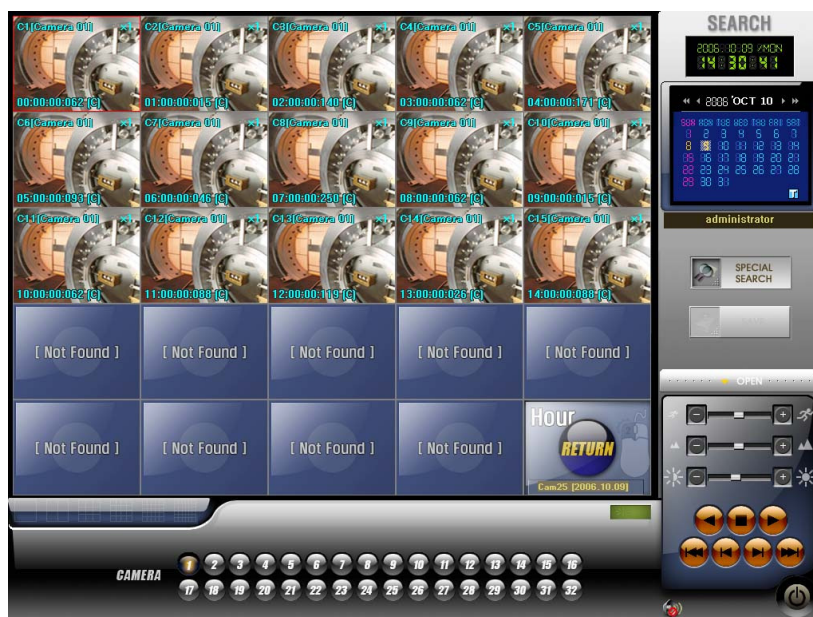
- 1) **Real Player** : special tool to monitor images in real time.
- 2) **Multi time Player** : playback the data on a multiple time zone on the same playback screen. Checkmark 'Multi time Player' and the system will load data. Select the data cell on the time table, and drag and drop it on the screen. The selected data will be shown. After all data is selected, playback with the playback control buttons.
- 3) **Day Search** : you can search through a day of data (00:00~23:59) per camera by hour or by minute.

Checkmark 'Day Search' and the system will load data. Select the camera to be searched, and each hour of the day will be display in each screen. Playback the data with the playback control buttons.

To view the data of that day per minute, double click on the particular screen (hour) to be viewed. The hour will be displayed in five-minute intervals, and using the same procedure (double clicking on the interval) the data can be viewed per minute.

To return to the previous view, click 'Return'.


If there is no data in a specific time interval, the words 'Not Found' will be displayed on screen.



- 4) **Object Search** : To quickly search movement of an object in a specific zone, checkmark 'Object' search and select a camera to search. Click 'scan' button and drag to the designated area for searching.



- **Sensitivity** : select the sensitivity from 0 to 24. The default is 13.
- **SEC/MIN** : select search by minute or by second.
- **Time Scope** : set up searching time (hours and minutes).
- **Scan button**: click to designate the area for searching, and click again to begin search.
- **Result** : search results are shown. Click each result to check the movement. Normal playback can also be performed by clicking the playback control button.

-**Tip**: In the 'From' field, quickly skip through each hour to find when an object is moved. Then skip through the minutes to drill down the exact hour & minute the object was moved. Set the 'To' time within one minute of this time and then choose 'sec'. Click on  to view your results.

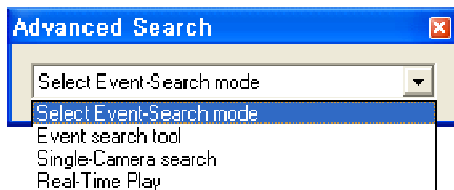
Remote Search

- **Remote Search** : Search the data which has been saved on the DVR Site.

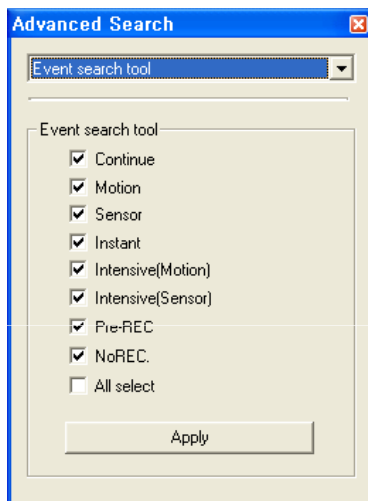


- Click 'CALENDAR' button to search the saved data on the drive.

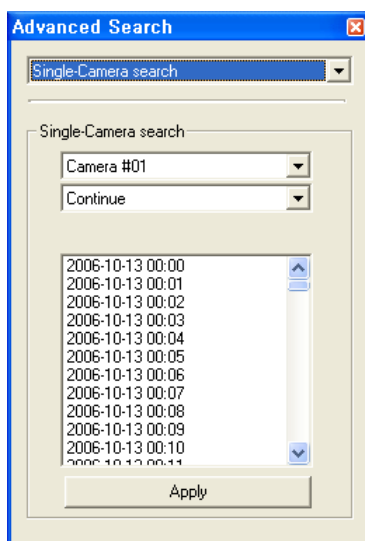
- **Special search** : an advanced search tool which allows the user to search by single camera, event search, and Real-time Play. Click 'Special search' and the 'Advanced Search' box will pop up. Highlight the desired search tool.



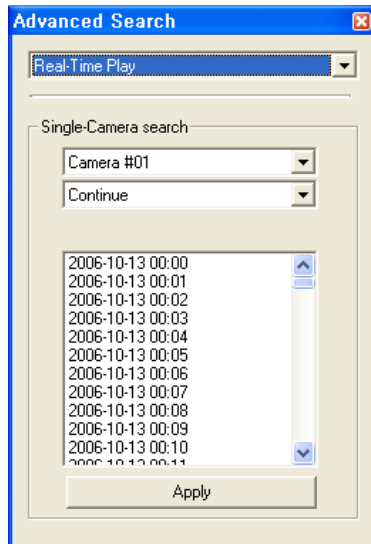
- **Event search tool** : search data by event.



- **Single-Camera search** : select a camera, event mode and hour. The data is shown per minute.



- **Real-Time Play** : select a camera, Real-Time Play mode, and hour. The data is shown per minute.

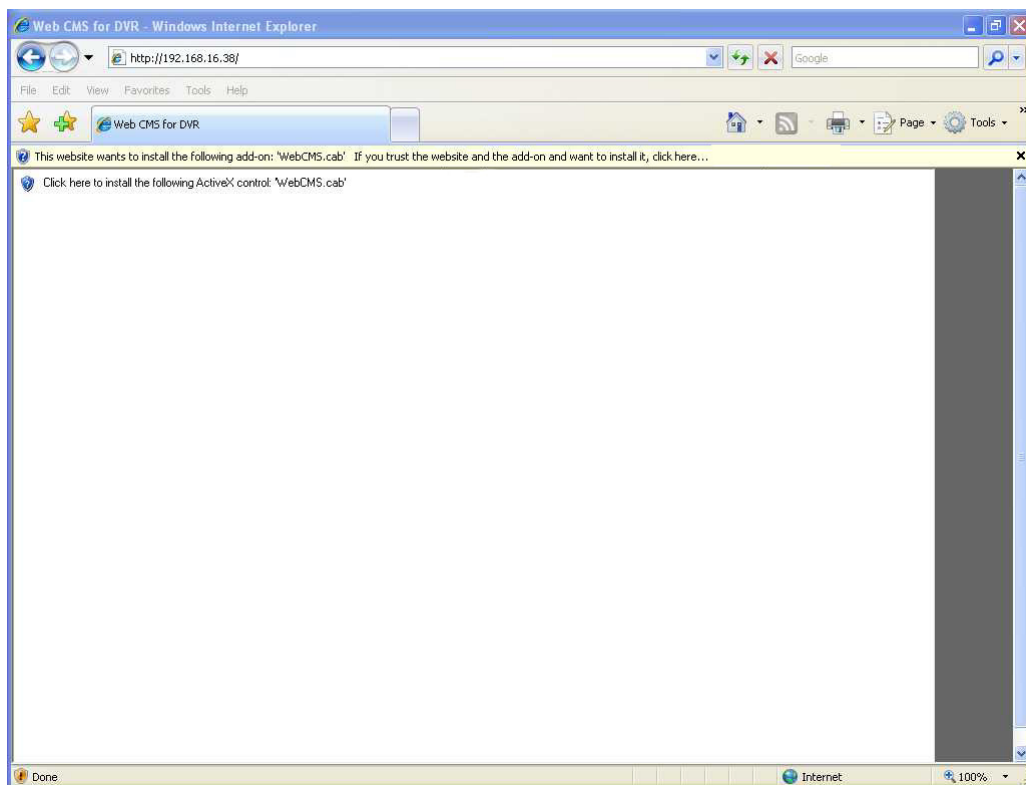


Chapter 7 Web CMS

● **Web CMS** : Remote monitoring is available through Internet Explorer without using any specific software.

36 Display Screens, Division screens, PTZ Controller are supported.

- Input IP or domain to the address bar.



- Install ActiveX file related to Web CMS.





- Click connect button to input user information into the Connect Config pop up box.

Note: On the Extend Config button and double check the Domain or IP address is correct

Connect Config

DVR TYPE:

DVR CODE:

User ID:

User PW:

☒ SITE IP:

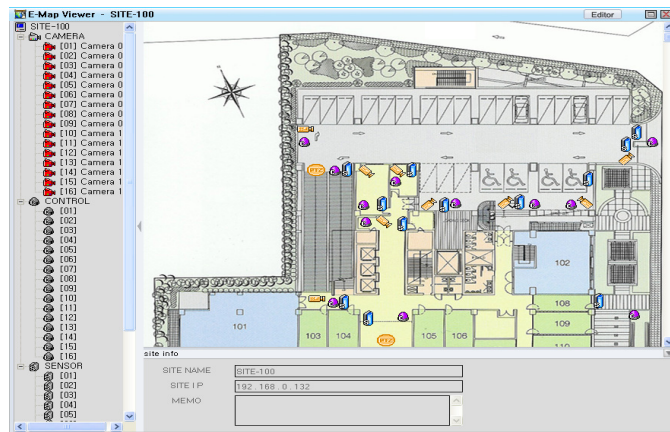
☐ DOMAIN:

Data port:

Stream port:

Chapter 8 e-Map Editor / Viewer

- **Site Map** : Drawing or map can be used as an E-MAP for three-dimensional surveillance of DVR sites.

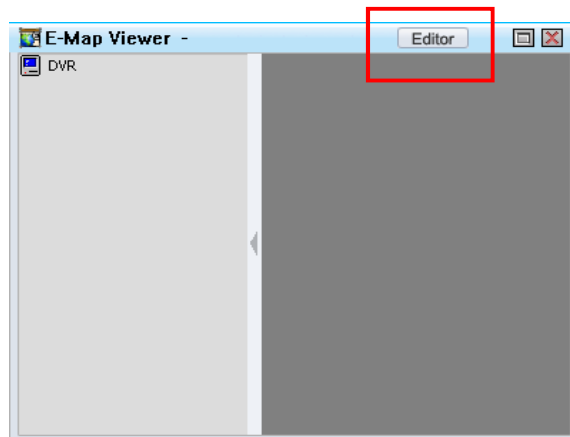
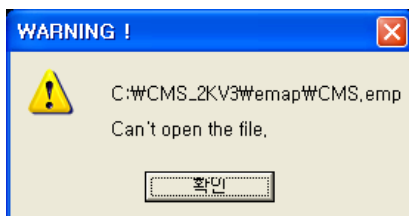


- 1) Click image on LIVE screen and SITE MAP button. The default E-MAP file will open.
(Default: E-MAP FILE - SITE-100)

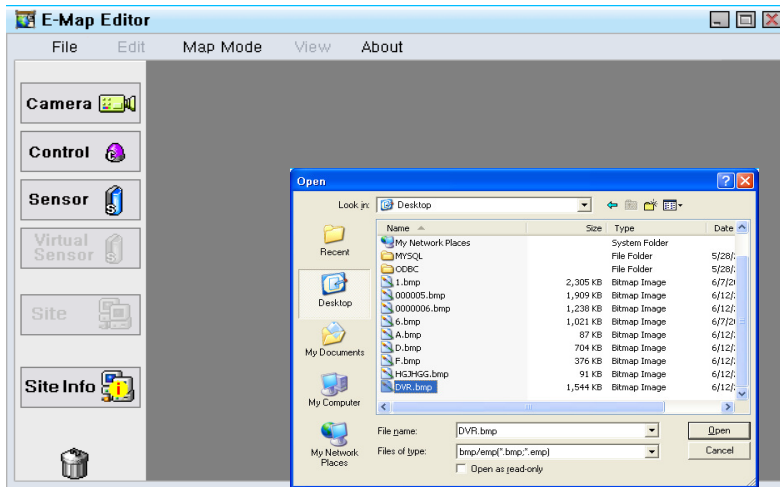
- 2) The site name must be the same as the name of the E-MAP.

● E-MAP EDITOR

- 1) Setup the desired DVR site in CMS SETUP to connect to via CMS. (e.g. SITE NAME :DVR)
- 2) Click image on Live screen and SITE MAP button.
- 3) The below warning message will be shown if the SITE NAME 'DVR' is not the same as the name of default E-MAP file 'SITE-100'.
- 4) Click the OK button. E-MAP Viewer window open. Click the Editor button.



5) Click 'File → NEW' and select bmp/ JPEG file for E-MAP.




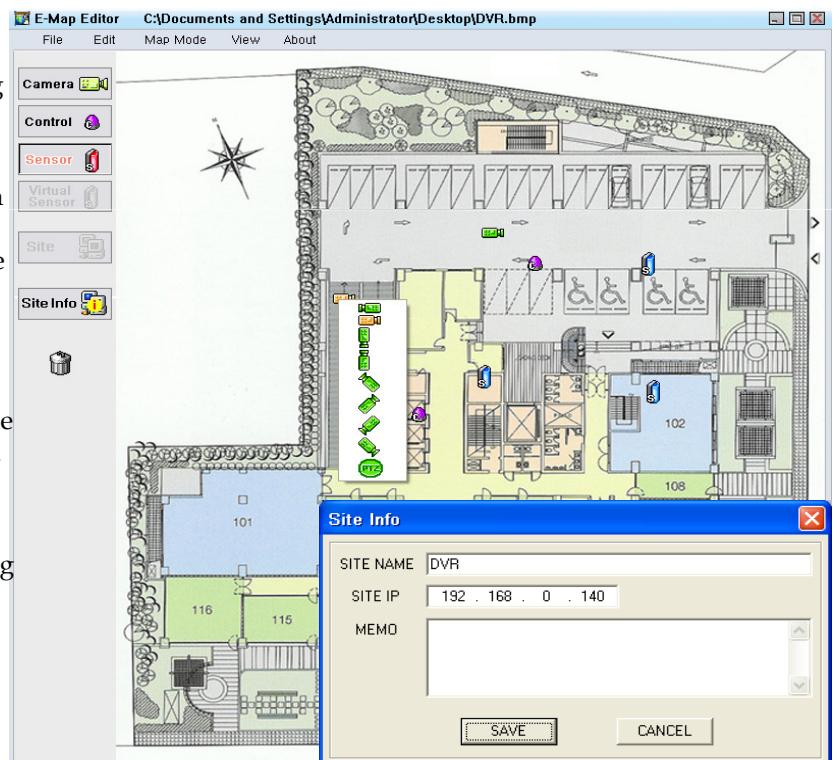
6) On the bmp/ JPEG file user can arrange camera, control, sensor by using the CAMERA, CONTROL, SENSOR buttons.

7) Right mouse button can be clicked on the arranged cameras to change the direction or to change the original image to the PTZ camera image.

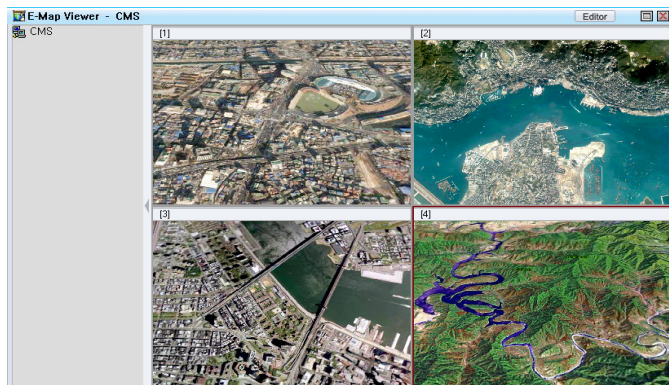
8) Click SITE INFO button to add additional information on the DVR site.

9) Save the file in the EMAP folder in the directory where CMS_2 is installed. (e.g. C:\CMS_2KV3\emap)

10) User can remove the arranged icons by dragging them to  or by pressing the delete key.



- **CMS Map** : DVR site maps can be managed by CMS MAP.



- 1) Click CMS MAP button. The above map will be displayed – the name of this file is CMS.EMP.

● E-MAP EDITOR

- 1) Click CMS MAP button to operate E-MAP Viewer.
- 2) Click Editor button.
- 3) Click 'File → NEW' and select bmp / JPEG file for E-MAP.
- 6) Once bmp / JPEG file is open the SITE icons can be located on the map by using the Site button.
- 7) Double click the located Site icons. The Property pop up box will appear.
- 8) Input the Site name that was saved in SITE MAP. SITE MAP will be linked with CMS MAP.

If an event occurs at Site, the relative Site icon on the CMS MAP will flash.



- **EMAP basic menu functions**

- **File**

- 1) NEW: Create new bmp. file.
- 2) OPEN: Open bmp. file or previous EMAP file.
- 3) SAVE: Save file.
- 4) SAVE AS: Save file with another name.
- 5) CLOSE: Close EMAP file or bmp. file.
- 6) EXIT: Exit out of the EMAP Editor.

- **Edit**

- 1) Edit Map Name: Edit the name of each map.
- 2) ADD MAP: Add new EMAP file.
- 3) COPY MAP: Copy currently opened bmp. file or EMAP file.
- 4) PASTE MAP: Paste copied file.
- 5) DELETE MAP: Delete currently displayed map.
- 6) DELETE OBJECT: Delete selected icons.
- 7) Select All Object: Select all the icons on the current map.

- **Map Mode**

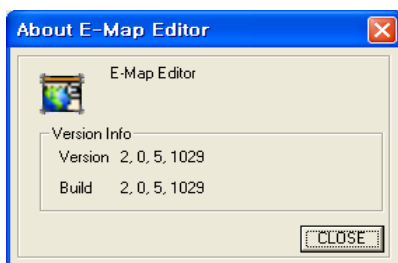
- 1) SITE MAP: Change Editor mode to SITE MAP.
- 2) CMS MAP: Change Editor mode to CMS MAP.

- **View**

- 1) CAMERA STATE: Camera information can be viewed.
- 2) CONTROL STATE: Control information can be viewed.
- 3) SENSOR STATE: Sensor information can be viewed.

- **About**

- 1) Display E-Map Editor version.



Chapter 9 Warranty

WARRANTY :

We warrant that DigitalSI XPE Series DVR (Product) will be free from defects in materials and workmanship for a Period of two years from the date the customer acquires the Product.

If such a defect occurs, return the Product to us and we will, at our opinion, either repair or replace the Product.

This remedy is your exclusive remedy for breach of this warranty. The proof of purchase is required for the warranty.

This warranty shall not apply to repairs or replacements necessitated by any cause beyond the control of DigitalSI Pty Ltd., including, but not limited to, 1) improper installation, 2) acts of nature, 3) accident, 4) misuse, 5) lack of proper maintenance, 6) voltage fluctuations, and 7) unauthorized repairs or modifications.

This warranty gives the customer certain legal rights. Other rights, which vary from state to state may be available to the customer.

LIMITATION OF WARRANTIES AND LIABILITY :

Except for the expressed warranty above, the Product is provided on an as is basis without an other warranties or conditions expressed or implied, including but not limited to warranties of merchantable quality, merchantability or fitness for a particular purpose, or those arising by law, statute, usage of trade or course of dealing. The entire risk as to the results and performances of the Product is assumed by you. Neither we nor our dealers or suppliers shall have any liability to you or any other person or entity for any indirect, incidental, special or consequential damages whatsoever, including but not limited to, loss of revenue or profit, or other commercial or economic loss, even if we have been advised of the possibility of such damages or they are foreseeable: or for claims by a third party.

Our maximum aggregate liability to you, and that of our dealers and suppliers, shall not exceed the amount paid by the dealer for the product. The limitations in this section shall apply whether of not the alleged breach or default is a breach of a fundamental condition or term, or a fundamental breach.